

Product datasheet for **TA360620**

RPS6KA3 Rabbit Polyclonal Antibody

Product data:

Product Type:	Primary Antibodies
Applications:	WB
Reactivity:	Human, Mouse
Host:	Rabbit
Clonality:	Polyclonal
Immunogen:	The immunogen is a synthetic peptide directed towards the middle region of human RPS6KA3
Specificity:	Expected reactivity: Human
Formulation:	Liquid. Purified antibody supplied in 1x PBS buffer with 0.09% (w/v) sodium azide and 2% sucrose. <i>Note that this product is shipped as lyophilized powder to China customers.</i>
Concentration:	lot specific
Purification:	Affinity purified
Conjugation:	Unconjugated
Storage:	For short term use, store at 2-8°C up to 1 week. For long term storage, store at -20°C in small aliquots to prevent freeze-thaw cycles.
Stability:	Shelf life: one year from despatch.
Predicted Protein Size:	84 kDa
Gene Name:	ribosomal protein S6 kinase A3
Database Link:	NP_004577.1 Entrez Gene 110651 Mouse Entrez Gene 6197 Human P51812
Background:	This gene encodes a member of the RSK (ribosomal S6 kinase) family of serine/threonine kinases. This kinase contains 2 non-identical kinase catalytic domains and phosphorylates various substrates, including members of the mitogen-activated kinase (MAPK) signalling pathway. The activity of this protein has been implicated in controlling cell growth and differentiation. Mutations in this gene have been associated with Coffin-Lowry syndrome (CLS).



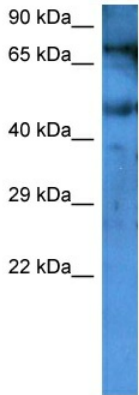
[View online »](#)

Synonyms: CLS; HU-3; ISPK-1; ISPK1; MAPKAPK1B; MRX19; p90-RSK2; pp90RSK2; RSK; RSK-2; RSK2; S6K-alpha3

Protein Families: Druggable Genome, Protein Kinase

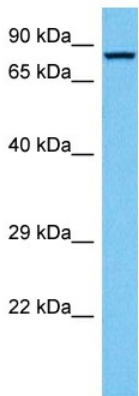
Protein Pathways: Long-term potentiation, MAPK signaling pathway, mTOR signaling pathway, Neurotrophin signaling pathway, Oocyte meiosis, Progesterone-mediated oocyte maturation

Product images:



Host: Rabbit
 Target Name: RPS6KA3
 Sample Type: Liver Tumor Lysate
 Antibody Dilution: 1.0µg/ml

Host: Rabbit
 Target Name: RPS6KA3
 Sample Tissue: Human Liver Tumor
 Antibody Dilution: 1.0ug/ml



Host: Rabbit
 Target Name: Rps6ka3
 Sample Type: Mouse Heart Lysate
 Antibody Dilution: 1.0µg/ml

Host: Mouse
 Target Name: RPS6KA3
 Sample Tissue: Mouse Heart
 Antibody Dilution: 1ug/ml