

Product datasheet for **TA360619**

K Cadherin (CDH6) Rabbit Polyclonal Antibody

Product data:

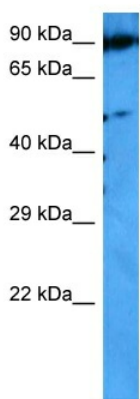
Product Type:	Primary Antibodies
Applications:	WB
Reactivity:	Human
Host:	Rabbit
Clonality:	Polyclonal
Immunogen:	The immunogen is a synthetic peptide directed towards the N terminal region of human CDH6
Specificity:	Expected reactivity: Human
Formulation:	Liquid. Purified antibody supplied in 1x PBS buffer with 0.09% (w/v) sodium azide and 2% sucrose. <i>Note that this product is shipped as lyophilized powder to China customers.</i>
Concentration:	lot specific
Purification:	Affinity purified
Conjugation:	Unconjugated
Storage:	For short term use, store at 2-8°C up to 1 week. For long term storage, store at -20°C in small aliquots to prevent freeze-thaw cycles.
Stability:	Shelf life: one year from despatch.
Predicted Protein Size:	88 kDa
Gene Name:	cadherin 6
Database Link:	NP_004923.1 Entrez Gene 1004 Human P55285
Background:	This gene encodes a member of the cadherin superfamily. Cadherins are membrane glycoproteins that mediate homophilic cell-cell adhesion and play critical roles in cell differentiation and morphogenesis. The encoded protein is a type II cadherin and may play a role in kidney development as well as endometrium and placenta formation. Decreased expression of this gene may be associated with tumor growth and metastasis.
Synonyms:	K-cadherin; KCAD



[View online »](#)

Protein Families: Transmembrane

Product images:



Host: Rabbit
Target Name: CDH6
Sample Type: PANC1 Cell Lysate
Antibody Dilution: 1.0µg/ml

Host: Rabbit
Target Name: CDH6
Sample Tissue: Human PANC1 Whole Cell
Antibody Dilution: 1.0ug/ml