

## Product datasheet for **TA360608**

### APOBEC3C Rabbit Polyclonal Antibody

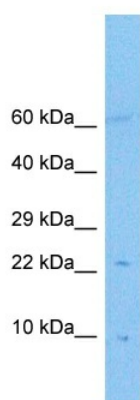
#### Product data:

Product Type:	Primary Antibodies
Applications:	WB
Reactivity:	Human
Host:	Rabbit
Clonality:	Polyclonal
Immunogen:	The immunogen is a synthetic peptide directed towards the C terminal region of human APOBEC3C
Specificity:	<b>Expected reactivity:</b> Human
Formulation:	Liquid. Purified antibody supplied in 1x PBS buffer with 0.09% (w/v) sodium azide and 2% sucrose. <i>Note that this product is shipped as lyophilized powder to China customers.</i>
Concentration:	lot specific
Purification:	Affinity purified
Conjugation:	Unconjugated
Storage:	For short term use, store at 2-8°C up to 1 week. For long term storage, store at -20°C in small aliquots to prevent freeze-thaw cycles.
Stability:	Shelf life: one year from despatch.
Predicted Protein Size:	23 kDa
Gene Name:	apolipoprotein B mRNA editing enzyme catalytic subunit 3C
Database Link:	<a href="#">NP_055323.2</a> <a href="#">Entrez Gene 27350 Human</a> <a href="#">Q9NRW3</a>
Background:	This gene is a member of the cytidine deaminase gene family. It is one of seven related genes or pseudogenes found in a cluster thought to result from gene duplication, on chromosome 22. Members of the cluster encode proteins that are structurally and functionally related to the C to U RNA-editing cytidine deaminase APOBEC1. It is thought that the proteins may be RNA editing enzymes and have roles in growth or cell cycle control.
Synonyms:	APOBEC1-like; APOBEC1L; ARDC2; ARDC4; ARP5; bK150C2.3; MGC19485; PBI



[View online >](#)

## Product images:



Host: Rabbit  
Target Name: APOBEC3C  
Sample Type: DLD1 Cell Lysate  
Antibody Dilution: 1.0 $\mu$ g/ml

Host: Rabbit  
Target Name: APOBEC3C  
Sample Tissue: Human DLD1 Whole Cell  
Antibody Dilution: 1.0ug/ml