

Product datasheet for **TA360593**

PAFAH (PLA2G7) Rabbit Polyclonal Antibody

Product data:

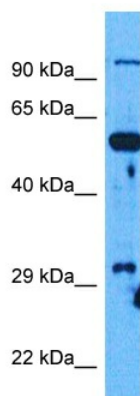
Product Type:	Primary Antibodies
Applications:	WB
Reactivity:	Human
Host:	Rabbit
Clonality:	Polyclonal
Immunogen:	The immunogen is a synthetic peptide directed towards the middle region of human PLA2G7
Specificity:	Expected reactivity: Human
Formulation:	Liquid. Purified antibody supplied in 1x PBS buffer with 0.09% (w/v) sodium azide and 2% sucrose. <i>Note that this product is shipped as lyophilized powder to China customers.</i>
Concentration:	lot specific
Purification:	Affinity purified
Conjugation:	Unconjugated
Storage:	For short term use, store at 2-8°C up to 1 week. For long term storage, store at -20°C in small aliquots to prevent freeze-thaw cycles.
Stability:	Shelf life: one year from despatch.
Predicted Protein Size:	50 kDa
Gene Name:	phospholipase A2 group VII
Database Link:	NP_001161829.1 Entrez Gene 7941 Human Q13093
Background:	The protein encoded by this gene is a secreted enzyme that catalyzes the degradation of platelet-activating factor to biologically inactive products. Defects in this gene are a cause of platelet-activating factor acetylhydrolase deficiency. Two transcript variants encoding the same protein have been found for this gene.
Synonyms:	LDL-PLA(2); LDL-PLA2; LP-PLA2; PAFAH
Protein Families:	Druggable Genome, Secreted Protein



[View online »](#)

Protein Pathways: Ether lipid metabolism, Metabolic pathways

Product images:



Host: Rabbit
Target Name: PLA2G7
Sample Type: MCF7 Cell Lysate
Antibody Dilution: 1.0 μ g/ml

Host: Rabbit
Target Name: PLA2G7
Sample Tissue: Human MCF7 Whole Cell
Antibody Dilution: 1.0 μ g/ml