

Product datasheet for **TA360590**

MMP15 Rabbit Polyclonal Antibody

Product data:

Product Type:	Primary Antibodies
Applications:	WB
Reactivity:	Human
Host:	Rabbit
Clonality:	Polyclonal
Immunogen:	The immunogen is a synthetic peptide directed towards the middle region of human MMP15
Specificity:	Expected reactivity: Human
Formulation:	Liquid. Purified antibody supplied in 1x PBS buffer with 0.09% (w/v) sodium azide and 2% sucrose. <i>Note that this product is shipped as lyophilized powder to China customers.</i>
Concentration:	lot specific
Purification:	Affinity purified
Conjugation:	Unconjugated
Storage:	For short term use, store at 2-8°C up to 1 week. For long term storage, store at -20°C in small aliquots to prevent freeze-thaw cycles.
Stability:	Shelf life: one year from despatch.
Predicted Protein Size:	76 kDa
Gene Name:	matrix metalloproteinase 15
Database Link:	NP_002419.1 Entrez Gene 4324 Human P51511



[View online »](#)

Background:

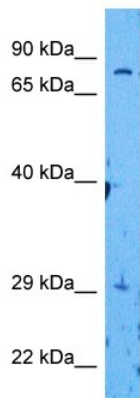
Proteins of the matrix metalloproteinase (MMP) family are involved in the breakdown of extracellular matrix in normal physiological processes, such as embryonic development, reproduction, and tissue remodeling, as well as in disease processes, such as arthritis and metastasis. Most MMP's are secreted as inactive proproteins which are activated when cleaved by extracellular proteinases. However, the protein encoded by this gene is a member of the membrane-type MMP (MT-MMP) subfamily; each member of this subfamily contains a potential transmembrane domain suggesting that these proteins are expressed at the cell surface rather than secreted.

Synonyms:

MMP-15; MT2-MMP; MT2MMP; MTMMP2; SMCP-2

Protein Families:

Druggable Genome, Protease, Transmembrane

Product images:

Host: Rabbit
Target Name: MMP15
Sample Type: DLD1 Cell Lysate
Antibody Dilution: 1.0µg/ml

Host: Rabbit
Target Name: MMP15
Sample Tissue: Human DLD1 Whole Cell
Antibody Dilution: 1.0ug/ml