

## Product datasheet for **TA360588**

### **RIN1 Rabbit Polyclonal Antibody**

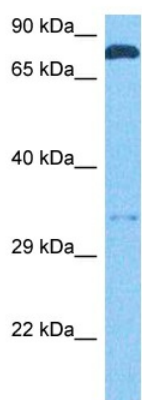
#### **Product data:**

Product Type:	Primary Antibodies
Applications:	WB
Reactivity:	Human
Host:	Rabbit
Clonality:	Polyclonal
Immunogen:	The immunogen is a synthetic peptide directed towards the N terminal region of human RIN1
Specificity:	<b>Expected reactivity:</b> Human
Formulation:	Liquid. Purified antibody supplied in 1x PBS buffer with 0.09% (w/v) sodium azide and 2% sucrose.
Concentration:	lot specific
Purification:	Affinity purified
Conjugation:	Unconjugated
Storage:	For short term use, store at 2-8°C up to 1 week. For long term storage, store at -20°C in small aliquots to prevent freeze-thaw cycles.
Stability:	Shelf life: one year from despatch.
Predicted Protein Size:	86 kDa
Gene Name:	Ras and Rab interactor 1
Database Link:	<a href="#">NP_004283.2</a> <a href="#">Entrez Gene 9610 Human</a> <a href="#">Q13671</a>
Synonyms:	RIN1



[View online »](#)

## Product images:



Host: Rabbit  
Target Name: RIN1  
Sample Type: MDA-MB-435S Cell Lysate  
Antibody Dilution: 1.0 $\mu$ g/ml

Host: Rabbit  
Target Name: RIN1  
Sample Tissue: MDA-MB-435S Whole Cell lysates  
Antibody Dilution: 1.0ug/ml