

Product datasheet for **TA360585**

Aurora B (AURKB) Rabbit Polyclonal Antibody

Product data:

Product Type:	Primary Antibodies
Applications:	WB
Reactivity:	Human, Mouse
Host:	Rabbit
Clonality:	Polyclonal
Immunogen:	The immunogen is a synthetic peptide directed towards the middle region of human AURKB
Specificity:	Expected reactivity: Human
Formulation:	Liquid. Purified antibody supplied in 1x PBS buffer with 0.09% (w/v) sodium azide and 2% sucrose. <i>Note that this product is shipped as lyophilized powder to China customers.</i>
Concentration:	lot specific
Purification:	Affinity purified
Conjugation:	Unconjugated
Storage:	For short term use, store at 2-8°C up to 1 week. For long term storage, store at -20°C in small aliquots to prevent freeze-thaw cycles.
Stability:	Shelf life: one year from despatch.
Predicted Protein Size:	39 kDa
Gene Name:	aurora kinase B
Database Link:	NP_001243763.1 Entrez Gene 20877 Mouse Entrez Gene 9212 Human Q96GD4
Background:	This gene encodes a member of the aurora kinase subfamily of serine/threonine kinases. The genes encoding the other two members of this subfamily are located on chromosomes 19 and 20. These kinases participate in the regulation of alignment and segregation of chromosomes during mitosis and meiosis through association with microtubules. A pseudogene of this gene is located on chromosome 8. Alternatively spliced transcript variants have been found for this gene.

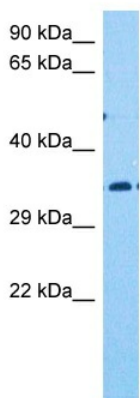


[View online »](#)

Synonyms: AIK2; AIM-1; AIM1; ARK2; AurB; aurkb-sv1; aurkb-sv2; aurora-1; aurora-B; IPL1; STK-1; STK5; STK12

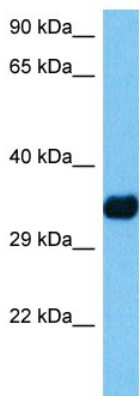
Protein Families: Druggable Genome, Protein Kinase, Stem cell - Pluripotency

Product images:



Host: Rabbit
 Target Name: AURKB
 Sample Type: Ovary Tumor Lysate
 Antibody Dilution: 1.0µg/ml

Host: Rabbit
 Target Name: AURKB
 Sample Tissue: Human Ovary Tumor
 Antibody Dilution: 1.0ug/ml



Host: Rabbit
 Target Name: Aurkb
 Sample Type: Mouse Liver Lysate
 Antibody Dilution: 1.0µg/ml

Host: Mouse
 Target Name: AURKB
 Sample Tissue: Mouse Liver
 Antibody Dilution: 1ug/ml