

Product datasheet for **TA360584**

Nck beta (NCK2) Rabbit Polyclonal Antibody

Product data:

Product Type:	Primary Antibodies
Applications:	WB
Reactivity:	Human
Host:	Rabbit
Clonality:	Polyclonal
Immunogen:	The immunogen is a synthetic peptide directed towards the middle region of human NCK2
Specificity:	Expected reactivity: Human
Formulation:	Liquid. Purified antibody supplied in 1x PBS buffer with 0.09% (w/v) sodium azide and 2% sucrose. <i>Note that this product is shipped as lyophilized powder to China customers.</i>
Concentration:	lot specific
Purification:	Affinity purified
Conjugation:	Unconjugated
Storage:	For short term use, store at 2-8°C up to 1 week. For long term storage, store at -20°C in small aliquots to prevent freeze-thaw cycles.
Stability:	Shelf life: one year from despatch.
Predicted Protein Size:	41 kDa
Gene Name:	NCK adaptor protein 2
Database Link:	NP_001004720.1 Entrez Gene 8440 Human O43639
Background:	This gene encodes a member of the NCK family of adaptor proteins. The protein contains three SH3 domains and one SH2 domain. The protein has no known catalytic function but has been shown to bind and recruit various proteins involved in the regulation of receptor protein tyrosine kinases. It is through these regulatory activities that this protein is believed to be involved in cytoskeletal reorganization. Alternate transcriptional splice variants, encoding different isoforms, have been characterized.
Synonyms:	GRB4; Nck-2; NCKbeta

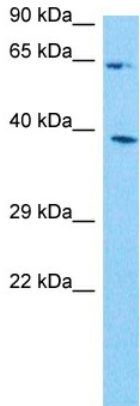


[View online »](#)

Protein Families: Druggable Genome

Protein Pathways: Axon guidance, ErbB signaling pathway, Pathogenic Escherichia coli infection, T cell receptor signaling pathway

Product images:



Host: Rabbit
Target Name: NCK2
Sample Type: PANC1 Cell Lysate
Antibody Dilution: 1.0µg/ml

Host: Rabbit
Target Name: NCK2
Sample Tissue: PANC1 Whole Cell lysates
Antibody Dilution: 1.0ug/ml