

Product datasheet for **TA360579**

SLC5A10 Rabbit Polyclonal Antibody

Product data:

Product Type:	Primary Antibodies
Applications:	WB
Reactivity:	Human
Host:	Rabbit
Clonality:	Polyclonal
Immunogen:	The immunogen is a synthetic peptide directed towards the N terminal region of human SLC5A10
Specificity:	Expected reactivity: Human
Formulation:	Liquid. Purified antibody supplied in 1x PBS buffer with 0.09% (w/v) sodium azide and 2% sucrose. <i>Note that this product is shipped as lyophilized powder to China customers.</i>
Concentration:	lot specific
Purification:	Affinity purified
Conjugation:	Unconjugated
Storage:	For short term use, store at 2-8°C up to 1 week. For long term storage, store at -20°C in small aliquots to prevent freeze-thaw cycles.
Stability:	Shelf life: one year from despatch.
Predicted Protein Size:	65 kDa
Gene Name:	solute carrier family 5 member 10
Database Link:	NP_001035915.1 Entrez Gene 125206 Human A0PJK1



[View online »](#)

Background:

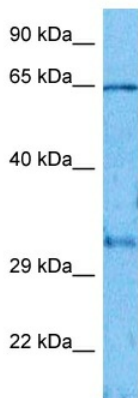
This gene is a member of the sodium/glucose transporter family. Members of this family are sodium-dependent transporters and can be divided into two subfamilies based on sequence homology, one that co-transporters sugars and the second that transports molecules such as ascorbate, choline, iodide, lipoate, monocarboxylates, and pantothenate. The protein encoded by this gene has the highest affinity for mannose and has been reported to be most highly expressed in the kidney. This protein may function as a kidney-specific, sodium-dependent mannose and fructose co-transporter. Alternative splicing results in multiple transcript variants that encode different protein isoforms.

Synonyms:

FLJ25217; SGLT5

Protein Families:

Transmembrane

Product images:

Host: Rabbit
Target Name: SLC5A10
Sample Type: RPMI 8226 Cell Lysate
Antibody Dilution: 1.0µg/ml

Host: Rabbit
Target Name: SLC5A10
Sample Tissue: RPMI 8226 Whole Cell lysates
Antibody Dilution: 1.0ug/ml