

Product datasheet for **TA360574**

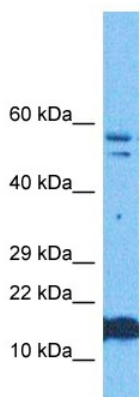
IFITM1 Rabbit Polyclonal Antibody

Product data:

Product Type:	Primary Antibodies
Applications:	WB
Reactivity:	Human
Host:	Rabbit
Clonality:	Polyclonal
Immunogen:	The immunogen is a synthetic peptide directed towards the N terminal region of human IFITM1
Specificity:	Expected reactivity: Human
Formulation:	Liquid. Purified antibody supplied in 1x PBS buffer with 0.09% (w/v) sodium azide and 2% sucrose. <i>Note that this product is shipped as lyophilized powder to China customers.</i>
Concentration:	lot specific
Purification:	Affinity purified
Conjugation:	Unconjugated
Storage:	For short term use, store at 2-8°C up to 1 week. For long term storage, store at -20°C in small aliquots to prevent freeze-thaw cycles.
Stability:	Shelf life: one year from despatch.
Predicted Protein Size:	14 kDa
Gene Name:	interferon induced transmembrane protein 1
Database Link:	NP_003632.3 Entrez Gene 8519 Human P13164
Synonyms:	9-27; CD225; IFI17; LEU13
Protein Families:	Druggable Genome, Transmembrane
Protein Pathways:	B cell receptor signaling pathway



[View online »](#)

Product images:


Host: Rabbit
 Target Name: IFITM1
 Sample Type: Stomach Tumor Lysate
 Antibody Dilution: 1.0µg/ml

Host: Rabbit
 Target Name: IFITM1
 Sample Tissue: Human Stomach Tumor
 Antibody Dilution: 1.0ug/ml



Host: Rabbit
 Target Name: IFITM1
 Sample Type: A549 Cell Lysate
 Antibody Dilution: 1.0µg/ml

Host: Rabbit
 Target Name: IFITM1
 Sample Tissue: Human A549 Whole Cell
 Antibody Dilution: 1ug/ml