

Product datasheet for **TA360568**

DPP8 Rabbit Polyclonal Antibody

Product data:

Product Type:	Primary Antibodies
Applications:	WB
Reactivity:	Human
Host:	Rabbit
Clonality:	Polyclonal
Immunogen:	The immunogen is a synthetic peptide directed towards the C terminal region of human DPP8
Specificity:	Expected reactivity: Human
Formulation:	Liquid. Purified antibody supplied in 1x PBS buffer with 0.09% (w/v) sodium azide and 2% sucrose. <i>Note that this product is shipped as lyophilized powder to China customers.</i>
Concentration:	lot specific
Purification:	Affinity purified
Conjugation:	Unconjugated
Storage:	For short term use, store at 2-8°C up to 1 week. For long term storage, store at -20°C in small aliquots to prevent freeze-thaw cycles.
Stability:	Shelf life: one year from despatch.
Predicted Protein Size:	103 kDa
Gene Name:	dipeptidyl peptidase 8
Database Link:	NP_060213.2 Entrez Gene 54878 Human Q6V1X1
Background:	This gene encodes a member of the peptidase S9B family, a small family of dipeptidyl peptidases that are able to cleave peptide substrates at a prolyl bond. The encoded protein shares similarity with dipeptidyl peptidase IV in that it is ubiquitously expressed, and hydrolyzes the same substrates. These similarities suggest that, like dipeptidyl peptidase IV, this protein may play a role in T-cell activation and immune function. Alternatively spliced transcript variants encoding different isoforms have been described.

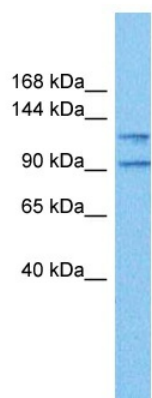


[View online »](#)

Synonyms: DP8; DPRP-1; DPRP1; FLJ14920; FLJ20283; MGC26191; MSTP141

Protein Families: Druggable Genome, Protease, Transmembrane

Product images:



Host: Rabbit
Target Name: DPP8
Sample Type: Stomach Tumor Lysate
Antibody Dilution: 1.0 μ g/ml

Host: Rabbit
Target Name: DPP8
Sample Tissue: Human Stomach Tumor
Antibody Dilution: 1.0 μ g/ml