

Product datasheet for **TA360565**

DOLK Rabbit Polyclonal Antibody

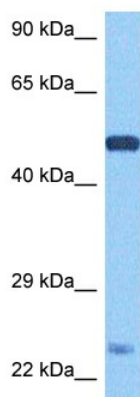
Product data:

Product Type:	Primary Antibodies
Applications:	WB
Reactivity:	Human
Host:	Rabbit
Clonality:	Polyclonal
Immunogen:	The immunogen is a synthetic peptide directed towards the middle region of human DOLK
Specificity:	Expected reactivity: Human
Formulation:	Liquid. Purified antibody supplied in 1x PBS buffer with 0.09% (w/v) sodium azide and 2% sucrose.
Concentration:	lot specific
Purification:	Affinity purified
Conjugation:	Unconjugated
Storage:	For short term use, store at 2-8°C up to 1 week. For long term storage, store at -20°C in small aliquots to prevent freeze-thaw cycles.
Stability:	Shelf life: one year from despatch.
Predicted Protein Size:	59 kDa
Gene Name:	dolichol kinase
Database Link:	NP_055723.1 Entrez Gene 22845 Human Q9UPQ8
Background:	The protein encoded by this gene catalyzes the CTP-mediated phosphorylation of dolichol, and is involved in the synthesis of Dol-P-Man, which is an essential glycosyl carrier lipid for C- and O-mannosylation, N- and O-linked glycosylation of proteins, and for the biosynthesis of glycosyl phosphatidylinositol anchors in endoplasmic reticulum. Mutations in this gene are associated with dolichol kinase deficiency.
Synonyms:	DK; DK1; KIAA1094; SEC59; TMEM15
Protein Families:	Transmembrane



[View online »](#)

Product images:



Host: Rabbit
Target Name: DOLK
Sample Type: MDA-MB-435s Lysate
Antibody Dilution: 1.0 μ g/ml

Host: Rabbit
Target Name: DOLK
Sample Tissue: Human MDA-MB-435s lysates
Antibody Dilution: 1 μ g/ml