

Product datasheet for **TA360564**

PRODH Rabbit Polyclonal Antibody

Product data:

Product Type:	Primary Antibodies
Applications:	WB
Reactivity:	Human
Host:	Rabbit
Clonality:	Polyclonal
Immunogen:	The immunogen is a synthetic peptide directed towards the middle region of human PRODH
Specificity:	Expected reactivity: Human
Formulation:	Liquid. Purified antibody supplied in 1x PBS buffer with 0.09% (w/v) sodium azide and 2% sucrose. <i>Note that this product is shipped as lyophilized powder to China customers.</i>
Concentration:	lot specific
Purification:	Affinity purified
Conjugation:	Unconjugated
Storage:	For short term use, store at 2-8°C up to 1 week. For long term storage, store at -20°C in small aliquots to prevent freeze-thaw cycles.
Stability:	Shelf life: one year from despatch.
Predicted Protein Size:	56 kDa
Gene Name:	proline dehydrogenase 1
Database Link:	NP_001182155.1 Entrez Gene 5625 Human O43272-1
Background:	This gene encodes a mitochondrial protein that catalyzes the first step in proline degradation. Mutations in this gene are associated with hyperprolinemia type 1 and susceptibility to schizophrenia 4 (SCZD4). This gene is located on chromosome 22q11.21, a region which has also been associated with the contiguous gene deletion syndromes, DiGeorge and CATCH22. Alternatively spliced transcript variants encoding different isoforms have been found for this gene.



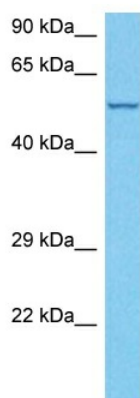
[View online »](#)

Synonyms: FLJ33744; HSPOX2; MGC148078; MGC148079; PIG6; POX; POX2; PRODH1; PRODH2; SCZD4; TP53I6

Protein Families: Druggable Genome

Protein Pathways: Arginine and proline metabolism, Metabolic pathways

Product images:



Host: Rabbit
Target Name: PRODH
Sample Type: K562 Cell Lysate
Antibody Dilution: 1.0 μ g/ml

Host: Rabbit
Target Name: PRODH
Sample Tissue: Human K562 Whole Cell lysates
Antibody Dilution: 1 μ g/ml