

## Product datasheet for **TA360563**

### **TAG1 (CNTN2) Rabbit Polyclonal Antibody**

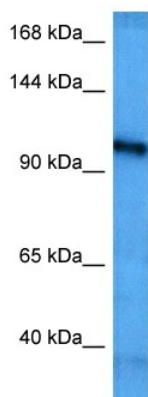
#### **Product data:**

Product Type:	Primary Antibodies
Applications:	WB
Reactivity:	Human
Host:	Rabbit
Clonality:	Polyclonal
Immunogen:	The immunogen is a synthetic peptide directed towards the middle region of human CNTN2
Specificity:	<b>Expected reactivity:</b> Human
Formulation:	Liquid. Purified antibody supplied in 1x PBS buffer with 0.09% (w/v) sodium azide and 2% sucrose. <i>Note that this product is shipped as lyophilized powder to China customers.</i>
Concentration:	lot specific
Purification:	Affinity purified
Conjugation:	Unconjugated
Storage:	For short term use, store at 2-8°C up to 1 week. For long term storage, store at -20°C in small aliquots to prevent freeze-thaw cycles.
Stability:	Shelf life: one year from despatch.
Predicted Protein Size:	114 kDa
Gene Name:	contactin 2
Database Link:	<a href="#">NP_005067.1</a> <a href="#">Entrez Gene 6900 Human</a> <a href="#">Q02246</a>
Background:	The protein encoded by this gene is a member of the immunoglobulin superfamily. It is a glycosylphosphatidylinositol (GPI)-anchored neuronal membrane protein that functions as a cell adhesion molecule. It may play a role in the formation of axon connections in the developing nervous system. It may also be involved in glial tumorigenesis and may provide a potential target for therapeutic intervention.
Synonyms:	Axonin-1; AXT; DKFZp781D102; FLJ42746; MGC157722; TAG-1; TAG1; TAX; TAX-1; TAX1
Protein Pathways:	Cell adhesion molecules (CAMs)



[View online »](#)

## Product images:



Host: Rabbit  
Target Name: CNTN2  
Sample Type: Jurkat Cell Lysate  
Antibody Dilution: 1.0 $\mu$ g/ml

Host: Rabbit  
Target Name: CNTN2  
Sample Tissue: Human Jurkat Whole Cell lysates  
Antibody Dilution: 1 $\mu$ g/ml