

## Product datasheet for **TA360562**

### YES1 Rabbit Polyclonal Antibody

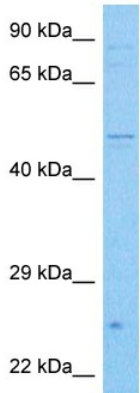
#### Product data:

Product Type:	Primary Antibodies
Applications:	WB
Reactivity:	Human, Mouse
Host:	Rabbit
Clonality:	Polyclonal
Immunogen:	The immunogen is a synthetic peptide directed towards the C terminal region of human YES1
Specificity:	<b>Expected reactivity:</b> Human
Formulation:	Liquid. Purified antibody supplied in 1x PBS buffer with 0.09% (w/v) sodium azide and 2% sucrose. <i>Note that this product is shipped as lyophilized powder to China customers.</i>
Concentration:	lot specific
Purification:	Affinity purified
Conjugation:	Unconjugated
Storage:	For short term use, store at 2-8°C up to 1 week. For long term storage, store at -20°C in small aliquots to prevent freeze-thaw cycles.
Stability:	Shelf life: one year from despatch.
Predicted Protein Size:	59 kDa
Gene Name:	YES proto-oncogene 1, Src family tyrosine kinase
Database Link:	<a href="#">NP_005424.1</a> <a href="#">Entrez Gene 22612 Mouse</a> <a href="#">Entrez Gene 7525 Human</a> <a href="#">P07947</a>
Background:	This gene is the cellular homolog of the Yamaguchi sarcoma virus oncogene. The encoded protein has tyrosine kinase activity and belongs to the src family of proteins. This gene lies in close proximity to thymidylate synthase gene on chromosome 18, and a corresponding pseudogene has been found on chromosome 22.
Synonyms:	c-yes; HsT441; OTTHUMP00000162194; p61-Yes; Yes
Protein Families:	Druggable Genome, Protein Kinase



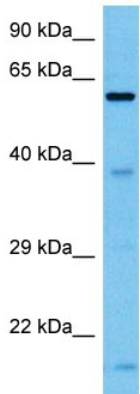
[View online »](#)

Protein Pathways: Adherens junction, Tight junction

**Product images:**

Host: Rabbit  
Target Name: YES1  
Sample Type: NCI-H226 Cell Lysate  
Antibody Dilution: 1.0µg/ml

Host: Rabbit  
Target Name: YES1  
Sample Tissue: Human NCI-H226 Whole Cell lysates  
Antibody Dilution: 1ug/ml



Host: Rabbit  
Target Name: Yes1  
Sample Type: Mouse Kidney Lysate  
Antibody Dilution: 1.0µg/ml

Host: Mouse  
Target Name: YES1  
Sample Tissue: Mouse Kidney  
Antibody Dilution: 1ug/ml