

Product datasheet for **TA360558**

Alkaline Phosphatase (ALPL) Rabbit Polyclonal Antibody

Product data:

Product Type:	Primary Antibodies
Applications:	WB
Reactivity:	Human, Rat
Host:	Rabbit
Clonality:	Polyclonal
Immunogen:	The immunogen is a synthetic peptide directed towards the middle region of human ALPL
Specificity:	Expected reactivity: Human
Formulation:	Liquid. Purified antibody supplied in 1x PBS buffer with 0.09% (w/v) sodium azide and 2% sucrose. <i>Note that this product is shipped as lyophilized powder to China customers.</i>
Concentration:	lot specific
Purification:	Affinity purified
Conjugation:	Unconjugated
Storage:	For short term use, store at 2-8°C up to 1 week. For long term storage, store at -20°C in small aliquots to prevent freeze-thaw cycles.
Stability:	Shelf life: one year from despatch.
Predicted Protein Size:	57 kDa
Gene Name:	alkaline phosphatase, liver/bone/kidney
Database Link:	NP_000469.3 Entrez Gene 25586 Rat Entrez Gene 249 Human P05186



[View online »](#)

Background:

This gene encodes a member of the alkaline phosphatase family of proteins. There are at least four distinct but related alkaline phosphatases: intestinal, placental, placental-like, and liver/bone/kidney (tissue non-specific). The first three are located together on chromosome 2, while the tissue non-specific form is located on chromosome 1. The product of this gene is a membrane bound glycosylated enzyme that is not expressed in any particular tissue and is, therefore, referred to as the tissue-nonspecific form of the enzyme. Alternative splicing results in multiple transcript variants, at least one of which encodes a preproprotein that is proteolytically processed to generate the mature enzyme. This enzyme may play a role in bone mineralization. Mutations in this gene have been linked to hypophosphatasia, a disorder that is characterized by hypercalcemia and skeletal defects.

Synonyms:

AP-TNAP; FLJ40094; FLJ93059; glycerophosphatase; HOPS; MGC161443; MGC167935; OTTHUMP0000002972; TNAP; TNSALP

Protein Families:

Druggable Genome

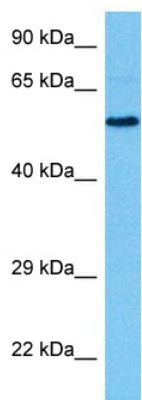
Protein Pathways:

Folate biosynthesis, Metabolic pathways

Product images:


Host: Rabbit
 Target Name: ALPL
 Sample Type: Jurkat Cell Lysate
 Antibody Dilution: 1.0µg/ml

Host: Rabbit
 Target Name: ALPL
 Sample Tissue: Human Jurkat Whole Cell
 Antibody Dilution: 1.0ug/ml



Host: Rabbit
Target Name: Alpl
Sample Type: Rat Brain Lysate
Antibody Dilution: 1.0 μ g/ml

Host: Rat
Target Name: ALPL
Sample Tissue: Rat Brain
Antibody Dilution: 1 μ g/ml