

Product datasheet for **TA360555**

CARD11 Rabbit Polyclonal Antibody

Product data:

Product Type:	Primary Antibodies
Applications:	WB
Reactivity:	Human, Mouse
Host:	Rabbit
Clonality:	Polyclonal
Immunogen:	The immunogen is a synthetic peptide directed towards the middle region of human CARD11
Specificity:	Expected reactivity: Human
Formulation:	Liquid. Purified antibody supplied in 1x PBS buffer with 0.09% (w/v) sodium azide and 2% sucrose. <i>Note that this product is shipped as lyophilized powder to China customers.</i>
Concentration:	lot specific
Purification:	Affinity purified
Conjugation:	Unconjugated
Storage:	For short term use, store at 2-8°C up to 1 week. For long term storage, store at -20°C in small aliquots to prevent freeze-thaw cycles.
Stability:	Shelf life: one year from despatch.
Predicted Protein Size:	128 kDa
Gene Name:	caspase recruitment domain family member 11
Database Link:	NP_115791.3 Entrez Gene 108723 Mouse Entrez Gene 84433 Human Q8TES3



[View online »](#)

Background:

The protein encoded by this gene belongs to the membrane-associated guanylate kinase (MAGUK) family, a class of proteins that functions as molecular scaffolds for the assembly of multiprotein complexes at specialized regions of the plasma membrane. This protein is also a member of the CARD protein family, which is defined by carrying a characteristic caspase-associated recruitment domain (CARD). This protein has a domain structure similar to that of CARD14 protein. The CARD domains of both proteins have been shown to specifically interact with BCL10, a protein known to function as a positive regulator of cell apoptosis and NF-kappaB activation. When expressed in cells, this protein activated NF-kappaB and induced the phosphorylation of BCL10.

Synonyms:

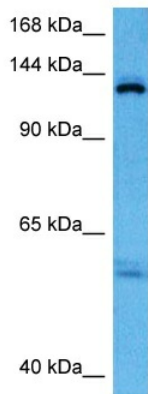
BIMP3; CARMA1; MGC133069

Protein Families:

Druggable Genome

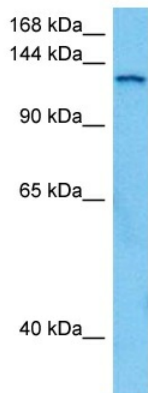
Protein Pathways:

B cell receptor signaling pathway, T cell receptor signaling pathway

Product images:


Host: Rabbit
 Target Name: CARD11
 Sample Type: HeLa Cell Lysate
 Antibody Dilution: 1.0µg/ml

Host: Rabbit
 Target Name: CARD11
 Sample Tissue: Human HeLa Whole Cell lysates
 Antibody Dilution: 1ug/ml



Host: Rabbit
 Target Name: Card11
 Sample Type: Mouse Brain Lysate
 Antibody Dilution: 1.0µg/ml

Host: Mouse
 Target Name: CARD11
 Sample Tissue: Mouse Brain
 Antibody Dilution: 1ug/ml