

Product datasheet for **TA360554**

VANGL2 Rabbit Polyclonal Antibody

Product data:

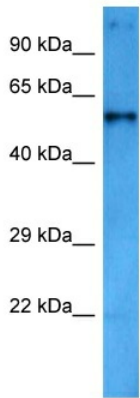
Product Type:	Primary Antibodies
Applications:	WB
Reactivity:	Human, Mouse
Host:	Rabbit
Clonality:	Polyclonal
Immunogen:	The immunogen is a synthetic peptide directed towards the N terminal region of human VANGL2
Specificity:	Expected reactivity: Human
Formulation:	Liquid. Purified antibody supplied in 1x PBS buffer with 0.09% (w/v) sodium azide and 2% sucrose. <i>Note that this product is shipped as lyophilized powder to China customers.</i>
Concentration:	lot specific
Purification:	Affinity purified
Conjugation:	Unconjugated
Storage:	For short term use, store at 2-8°C up to 1 week. For long term storage, store at -20°C in small aliquots to prevent freeze-thaw cycles.
Stability:	Shelf life: one year from despatch.
Predicted Protein Size:	60 kDa
Gene Name:	VANGL planar cell polarity protein 2
Database Link:	NP_065068.1 Entrez Gene 93840 Mouse Entrez Gene 57216 Human Q9ULK5
Background:	The protein encoded by this gene is a membrane protein involved in the regulation of planar cell polarity, especially in the stereociliary bundles of the cochlea. The encoded protein transmits directional signals to individual cells or groups of cells in epithelial sheets. This protein is also involved in the development of the neural plate.
Synonyms:	KIAA1215; LPP1; LTAP; MGC119403; MGC119404; STB1; STBM; STBM1; strabismus
Protein Families:	Transmembrane



[View online »](#)

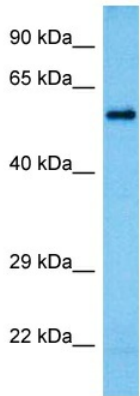
Protein Pathways: Wnt signaling pathway

Product images:



Host: Rabbit
 Target Name: VANGL2
 Sample Type: Lymph Node Tumor Lysate
 Antibody Dilution: 1.0µg/ml

Host: Rabbit
 Target Name: VANGL2
 Sample Tissue: Human Lymph Node Tumor
 Antibody Dilution: 1.0ug/ml



Host: Rabbit
 Target Name: Vangl2
 Sample Type: Mouse Testis Lysate
 Antibody Dilution: 1.0µg/ml

Host: Mouse
 Target Name: VANGL2
 Sample Tissue: Mouse Testis
 Antibody Dilution: 1ug/ml