

Product datasheet for **TA360553**

NCR3 Rabbit Polyclonal Antibody

Product data:

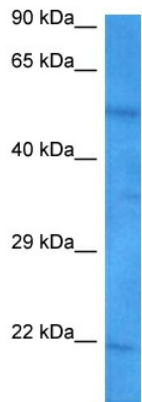
Product Type:	Primary Antibodies
Applications:	WB
Reactivity:	Human
Host:	Rabbit
Clonality:	Polyclonal
Immunogen:	The immunogen is a synthetic peptide directed towards the middle region of human NCR3
Specificity:	Expected reactivity: Human
Formulation:	Liquid. Purified antibody supplied in 1x PBS buffer with 0.09% (w/v) sodium azide and 2% sucrose. <i>Note that this product is shipped as lyophilized powder to China customers.</i>
Concentration:	lot specific
Purification:	Affinity purified
Conjugation:	Unconjugated
Storage:	For short term use, store at 2-8°C up to 1 week. For long term storage, store at -20°C in small aliquots to prevent freeze-thaw cycles.
Stability:	Shelf life: one year from despatch.
Predicted Protein Size:	22 kDa
Gene Name:	natural cytotoxicity triggering receptor 3
Database Link:	NP_001138938.1 Entrez Gene 259197 Human O14931
Background:	The protein encoded by this gene is a natural cytotoxicity receptor (NCR) that may aid NK cells in the lysis of tumor cells. The encoded protein interacts with CD3-zeta (CD247), a T-cell receptor. A single nucleotide polymorphism in the 5' untranslated region of this gene has been associated with mild malaria susceptibility. Three transcript variants encoding different isoforms have been found for this gene.
Synonyms:	1C7; CD337; LY117; MALS; NK-p30; NKp30
Protein Families:	Druggable Genome, ES Cell Differentiation/IPS



[View online »](#)

Protein Pathways: Natural killer cell mediated cytotoxicity

Product images:



Host: Rabbit
Target Name: NCR3
Sample Type: Jurkat Cell Lysate
Antibody Dilution: 1.0 μ g/ml

Host: Rabbit
Target Name: NCR3
Sample Tissue: Jurkat Whole Cell lysates
Antibody Dilution: 1 μ g/ml