

## Product datasheet for **TA360551**

### SGSM3 Rabbit Polyclonal Antibody

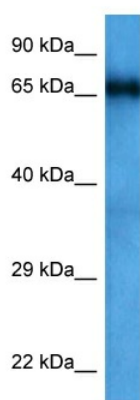
#### Product data:

Product Type:	Primary Antibodies
Applications:	WB
Reactivity:	Human
Host:	Rabbit
Clonality:	Polyclonal
Immunogen:	The immunogen is a synthetic peptide directed towards the middle region of human SGSM3
Specificity:	<b>Expected reactivity:</b> Human
Formulation:	Liquid. Purified antibody supplied in 1x PBS buffer with 0.09% (w/v) sodium azide and 2% sucrose.
Concentration:	lot specific
Purification:	Affinity purified
Conjugation:	Unconjugated
Storage:	For short term use, store at 2-8°C up to 1 week. For long term storage, store at -20°C in small aliquots to prevent freeze-thaw cycles.
Stability:	Shelf life: one year from despatch.
Predicted Protein Size:	82 kDa
Gene Name:	small G protein signaling modulator 3
Database Link:	<a href="#">NP_001288778.1</a> <a href="#">Entrez Gene 27352 Human</a> <a href="#">Q96HU1</a>
Synonyms:	DJ1042K10.2; DKFZp761D051; MAP; RabGAPLP; RUSC3; RUTBC3



[View online »](#)

Product images:



Host: Rabbit  
Target Name: SGSM3  
Sample Type: HCT15 Cell Lysate  
Antibody Dilution: 1.0µg/ml

Host: Rabbit  
Target Name: SGSM3  
Sample Tissue: HCT15 Whole Cell lysates  
Antibody Dilution: 1.0ug/ml