

## Product datasheet for **TA360547**

### CASK Rabbit Polyclonal Antibody

#### Product data:

Product Type:	Primary Antibodies
Applications:	WB
Reactivity:	Human
Host:	Rabbit
Clonality:	Polyclonal
Immunogen:	The immunogen is a synthetic peptide directed towards the middle region of human CASK
Specificity:	<b>Expected reactivity:</b> Human
Formulation:	Liquid. Purified antibody supplied in 1x PBS buffer with 0.09% (w/v) sodium azide and 2% sucrose. <i>Note that this product is shipped as lyophilized powder to China customers.</i>
Concentration:	lot specific
Purification:	Affinity purified
Conjugation:	Unconjugated
Storage:	For short term use, store at 2-8°C up to 1 week. For long term storage, store at -20°C in small aliquots to prevent freeze-thaw cycles.
Stability:	Shelf life: one year from despatch.
Predicted Protein Size:	102 kDa
Gene Name:	calcium/calmodulin dependent serine protein kinase
Database Link:	<a href="#">NP_001119526.1</a> <a href="#">Entrez Gene 8573 Human</a> <a href="#">O14936</a>
Background:	This gene encodes a calcium/calmodulin-dependent serine protein kinase. The encoded protein is a MAGUK (membrane-associated guanylate kinase) protein family member. These proteins are scaffold proteins and the encoded protein is located at synapses in the brain. Mutations in this gene are associated with FG syndrome 4, mental retardation and microcephaly with pontine and cerebellar hypoplasia, and a form of X-linked mental retardation. Multiple transcript variants encoding different isoforms have been found for this gene.



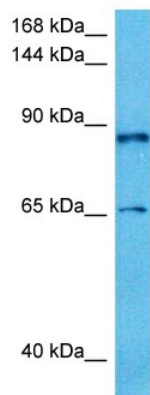
[View online »](#)

**Synonyms:** CAGH39; CMG; FGS4; FLJ22219; FLJ31914; hCASK; LIN2; MICPCH; TNRC8

**Protein Families:** Druggable Genome, Protein Kinase

**Protein Pathways:** Tight junction

### Product images:



Host: Rabbit  
Target Name: CASK  
Sample Type: THP-1 Cell Lysate  
Antibody Dilution: 1.0 $\mu$ g/ml

Host: Rabbit  
Target Name: CASK  
Sample Tissue: Human THP-1 Whole Cell lysates  
Antibody Dilution: 1 $\mu$ g/ml