

Product datasheet for **TA360546**

SLC22A4 Rabbit Polyclonal Antibody

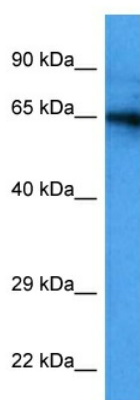
Product data:

Product Type:	Primary Antibodies
Applications:	WB
Reactivity:	Human
Host:	Rabbit
Clonality:	Polyclonal
Immunogen:	The immunogen is a synthetic peptide directed towards the C region of human SLC22A4
Specificity:	Expected reactivity: Human
Formulation:	Liquid. Purified antibody supplied in 1x PBS buffer with 0.09% (w/v) sodium azide and 2% sucrose.
Concentration:	lot specific
Purification:	Affinity purified
Conjugation:	Unconjugated
Storage:	For short term use, store at 2-8°C up to 1 week. For long term storage, store at -20°C in small aliquots to prevent freeze-thaw cycles.
Stability:	Shelf life: one year from despatch.
Predicted Protein Size:	61 kDa
Gene Name:	solute carrier family 22 member 4
Database Link:	NP_003050.2 Entrez Gene 6583 Human Q9H015
Background:	Polyspecific organic cation transporters in the liver, kidney, intestine, and other organs are critical for elimination of many endogenous small organic cations as well as a wide array of drugs and environmental toxins. The encoded protein is an organic cation transporter and plasma integral membrane protein containing eleven putative transmembrane domains as well as a nucleotide-binding site motif. Transport by this protein is at least partially ATP-dependent.
Synonyms:	ETT; MGC34546; MGC40524; OCTN1; UT2H
Protein Families:	Transmembrane



[View online »](#)

Product images:



Host: Rabbit
Target Name: SLC22A4
Sample Type: THP-1 Cell Lysate
Antibody Dilution: 1.0 μ g/ml

Host: Rabbit
Target Name: SLC22A4
Sample Tissue: THP-1 Whole Cell lysates
Antibody Dilution: 1 μ g/ml