

Product datasheet for **TA360545**

Dopamine Receptor D5 (DRD5) Rabbit Polyclonal Antibody

Product data:

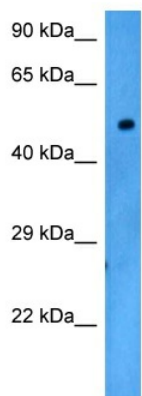
Product Type:	Primary Antibodies
Applications:	WB
Reactivity:	Human
Host:	Rabbit
Clonality:	Polyclonal
Immunogen:	The immunogen is a synthetic peptide directed towards the C terminal region of human DRD5
Specificity:	Expected reactivity: Human
Formulation:	Liquid. Purified antibody supplied in 1x PBS buffer with 0.09% (w/v) sodium azide and 2% sucrose. <i>Note that this product is shipped as lyophilized powder to China customers.</i>
Concentration:	lot specific
Purification:	Affinity purified
Conjugation:	Unconjugated
Storage:	For short term use, store at 2-8°C up to 1 week. For long term storage, store at -20°C in small aliquots to prevent freeze-thaw cycles.
Stability:	Shelf life: one year from despatch.
Predicted Protein Size:	53 kDa
Gene Name:	dopamine receptor D5
Database Link:	NP_000789.1 Entrez Gene 1816 Human P21918
Background:	This gene encodes the D5 subtype of the dopamine receptor. The D5 subtype is a G-protein coupled receptor which stimulates adenylyl cyclase. This receptor is expressed in neurons in the limbic regions of the brain. It has a 10-fold higher affinity for dopamine than the D1 subtype. Pseudogenes related to this gene reside on chromosomes 1 and 2.
Synonyms:	DBDR; DRD1B; DRD1L2; MGC10601
Protein Families:	Druggable Genome, GPCR, Transmembrane



[View online >](#)

Protein Pathways: Calcium signaling pathway, Neuroactive ligand-receptor interaction

Product images:



Host: Rabbit
Target Name: DRD5
Sample Type: 293T Cell Lysate
Antibody Dilution: 1.0 μ g/ml

Host: Rabbit
Target Name: DRD5
Sample Tissue: Human 293T Whole Cell
Antibody Dilution: 1.0 μ g/ml