

Product datasheet for **TA360542**

SERPING1 Rabbit Polyclonal Antibody

Product data:

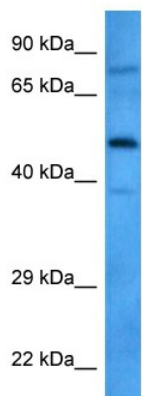
Product Type:	Primary Antibodies
Applications:	WB
Reactivity:	Human
Host:	Rabbit
Clonality:	Polyclonal
Immunogen:	The immunogen is a synthetic peptide directed towards the N region of human SERPING1
Specificity:	Expected reactivity: Human
Formulation:	Liquid. Purified antibody supplied in 1x PBS buffer with 0.09% (w/v) sodium azide and 2% sucrose. <i>Note that this product is shipped as lyophilized powder to China customers.</i>
Concentration:	lot specific
Purification:	Affinity purified
Conjugation:	Unconjugated
Storage:	For short term use, store at 2-8°C up to 1 week. For long term storage, store at -20°C in small aliquots to prevent freeze-thaw cycles.
Stability:	Shelf life: one year from despatch.
Predicted Protein Size:	55 kDa
Gene Name:	serpin family G member 1
Database Link:	NP_000053.2 Entrez Gene 710 Human P05155
Background:	This gene encodes a highly glycosylated plasma protein involved in the regulation of the complement cascade. Its protein inhibits activated C1r and C1s of the first complement component and thus regulates complement activation. Deficiency of this protein is associated with hereditary angioneurotic oedema (HANE). Alternative splicing results in multiple transcript variants encoding the same isoform.
Synonyms:	C1-INH; C1IN; C1Inh; C1NH; HAE1; HAE2
Protein Families:	Druggable Genome, Secreted Protein



[View online »](#)

Protein Pathways: Complement and coagulation cascades

Product images:



Host: Rabbit
Target Name: SERPING1
Sample Type: Jurkat Cell Lysate
Antibody Dilution: 1.0 μ g/ml

Host: Rabbit
Target Name: SERPING1
Sample Tissue: Jurkat Whole Cell lysates
Antibody Dilution: 1 μ g/ml