

## Product datasheet for **TA360539**

### HMGCR Rabbit Polyclonal Antibody

#### Product data:

Product Type:	Primary Antibodies
Applications:	WB
Reactivity:	Human, Mouse
Host:	Rabbit
Clonality:	Polyclonal
Immunogen:	The immunogen is a synthetic peptide directed towards the middle region of human HMGCR
Specificity:	<b>Expected reactivity:</b> Human
Formulation:	Liquid. Purified antibody supplied in 1x PBS buffer with 0.09% (w/v) sodium azide and 2% sucrose. <i>Note that this product is shipped as lyophilized powder to China customers.</i>
Concentration:	lot specific
Purification:	Affinity purified
Conjugation:	Unconjugated
Storage:	For short term use, store at 2-8°C up to 1 week. For long term storage, store at -20°C in small aliquots to prevent freeze-thaw cycles.
Stability:	Shelf life: one year from despatch.
Predicted Protein Size:	98 kDa
Gene Name:	3-hydroxy-3-methylglutaryl-CoA reductase
Database Link:	<a href="#">NP_000850.1</a> <a href="#">Entrez Gene 15357 Mouse</a> <a href="#">Entrez Gene 3156 Human</a> <a href="#">P04035</a>



[View online »](#)

**Background:**

HMG-CoA reductase is the rate-limiting enzyme for cholesterol synthesis and is regulated via a negative feedback mechanism mediated by sterols and non-sterol metabolites derived from mevalonate, the product of the reaction catalyzed by reductase. Normally in mammalian cells this enzyme is suppressed by cholesterol derived from the internalization and degradation of low density lipoprotein (LDL) via the LDL receptor. Competitive inhibitors of the reductase induce the expression of LDL receptors in the liver, which in turn increases the catabolism of plasma LDL and lowers the plasma concentration of cholesterol, an important determinant of atherosclerosis. Alternatively spliced transcript variants encoding different isoforms have been found for this gene.

**Synonyms:**

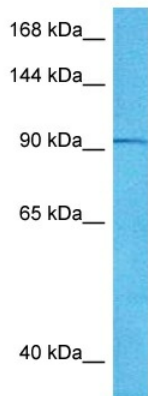
LDLCQ3

**Protein Families:**

Druggable Genome, Transmembrane

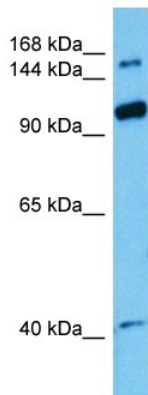
**Protein Pathways:**

Metabolic pathways, Terpenoid backbone biosynthesis

**Product images:**


Host: Rabbit  
 Target Name: HMGR  
 Sample Type: PANC1 Cell Lysate  
 Antibody Dilution: 1.0µg/ml

Host: Rabbit  
 Target Name: HMGR  
 Sample Tissue: Human PANC1 Whole Cell lysates  
 Antibody Dilution: 1ug/ml



Host: Rabbit  
 Target Name: Hmgcr  
 Sample Type: Mouse Pancreas Lysate  
 Antibody Dilution: 1.0µg/ml

Host: Mouse  
 Target Name: HMGR  
 Sample Tissue: Mouse Pancreas  
 Antibody Dilution: 1ug/ml