

## Product datasheet for **TA360537**

### MSH3 Rabbit Polyclonal Antibody

#### Product data:

|                         |                                                                                                                                                                                                                                                                                                                                                                                                                                                                                                                              |
|-------------------------|------------------------------------------------------------------------------------------------------------------------------------------------------------------------------------------------------------------------------------------------------------------------------------------------------------------------------------------------------------------------------------------------------------------------------------------------------------------------------------------------------------------------------|
| Product Type:           | Primary Antibodies                                                                                                                                                                                                                                                                                                                                                                                                                                                                                                           |
| Applications:           | WB                                                                                                                                                                                                                                                                                                                                                                                                                                                                                                                           |
| Reactivity:             | Human                                                                                                                                                                                                                                                                                                                                                                                                                                                                                                                        |
| Host:                   | Rabbit                                                                                                                                                                                                                                                                                                                                                                                                                                                                                                                       |
| Clonality:              | Polyclonal                                                                                                                                                                                                                                                                                                                                                                                                                                                                                                                   |
| Immunogen:              | The immunogen is a synthetic peptide directed towards the N terminal region of human MSH3                                                                                                                                                                                                                                                                                                                                                                                                                                    |
| Specificity:            | <b>Expected reactivity:</b> Human                                                                                                                                                                                                                                                                                                                                                                                                                                                                                            |
| Formulation:            | Liquid. Purified antibody supplied in 1x PBS buffer with 0.09% (w/v) sodium azide and 2% sucrose.<br><i>Note that this product is shipped as lyophilized powder to China customers.</i>                                                                                                                                                                                                                                                                                                                                      |
| Concentration:          | lot specific                                                                                                                                                                                                                                                                                                                                                                                                                                                                                                                 |
| Purification:           | Affinity purified                                                                                                                                                                                                                                                                                                                                                                                                                                                                                                            |
| Conjugation:            | Unconjugated                                                                                                                                                                                                                                                                                                                                                                                                                                                                                                                 |
| Storage:                | For short term use, store at 2-8°C up to 1 week. For long term storage, store at -20°C in small aliquots to prevent freeze-thaw cycles.                                                                                                                                                                                                                                                                                                                                                                                      |
| Stability:              | Shelf life: one year from despatch.                                                                                                                                                                                                                                                                                                                                                                                                                                                                                          |
| Predicted Protein Size: | 125 kDa                                                                                                                                                                                                                                                                                                                                                                                                                                                                                                                      |
| Gene Name:              | mutS homolog 3                                                                                                                                                                                                                                                                                                                                                                                                                                                                                                               |
| Database Link:          | <a href="#">NP_002430.3</a><br><a href="#">Entrez Gene 4437 Human</a><br><a href="#">P20585</a>                                                                                                                                                                                                                                                                                                                                                                                                                              |
| Background:             | The protein encoded by this gene forms a heterodimer with MSH2 to form MutS beta, part of the post-replicative DNA mismatch repair system. MutS beta initiates mismatch repair by binding to a mismatch and then forming a complex with MutL alpha heterodimer. This gene contains a polymorphic 9 bp tandem repeat sequence in the first exon. The repeat is present 6 times in the reference genome sequence and 3-7 repeats have been reported. Defects in this gene are a cause of susceptibility to endometrial cancer. |



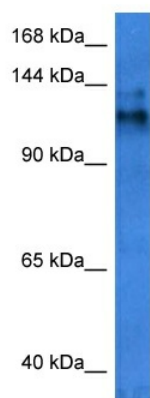
[View online »](#)

**Synonyms:** DUC1; DUG; DUP; MGC163306; MGC163308; MRP1

**Protein Families:** Druggable Genome, Stem cell - Pluripotency

**Protein Pathways:** Colorectal cancer, Mismatch repair, Pathways in cancer

### Product images:



Host: Rabbit  
Target Name: MSH3  
Sample Type: PANC1 Cell Lysate  
Antibody Dilution: 1.0 $\mu$ g/ml

Host: Rabbit  
Target Name: MSH3  
Sample Tissue: Human PANC1 Whole Cell lysates  
Antibody Dilution: 1 $\mu$ g/ml