

Product datasheet for **TA360521**

Importin 9 (IPO9) Rabbit Polyclonal Antibody

Product data:

Product Type:	Primary Antibodies
Applications:	WB
Reactivity:	Human
Host:	Rabbit
Clonality:	Polyclonal
Immunogen:	The immunogen is a synthetic peptide directed towards the C terminal region of human IPO9
Specificity:	Expected reactivity: Human
Formulation:	Liquid. Purified antibody supplied in 1x PBS buffer with 0.09% (w/v) sodium azide and 2% sucrose. <i>Note that this product is shipped as lyophilized powder to China customers.</i>
Concentration:	lot specific
Purification:	Affinity purified
Conjugation:	Unconjugated
Storage:	For short term use, store at 2-8°C up to 1 week. For long term storage, store at -20°C in small aliquots to prevent freeze-thaw cycles.
Stability:	Shelf life: one year from despatch.
Predicted Protein Size:	114 kDa
Gene Name:	importin 9
Database Link:	NP_060555.2 Entrez Gene 55705 Human Q96P70



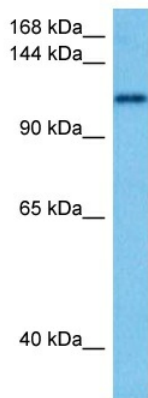
[View online »](#)

Background:

Functions in nuclear protein import as nuclear transport receptor. Serves as receptor for nuclear localization signals (NLS) in cargo substrates. Is thought to mediate docking of the importin/substrate complex to the nuclear pore complex (NPC) through binding to nucleoporin and the complex is subsequently translocated through the pore by an energy requiring, Ran-dependent mechanism. At the nucleoplasmic side of the NPC, Ran binds to the importin, the importin/substrate complex dissociates and importin is re-exported from the nucleus to the cytoplasm where GTP hydrolysis releases Ran. The directionality of nuclear import is thought to be conferred by an asymmetric distribution of the GTP- and GDP-bound forms of Ran between the cytoplasm and nucleus (By similarity). Mediates the nuclear import of H2B histone (By similarity), RPS7 and RPL18A. Prevents the cytoplasmic aggregation of RPS7 and RPL18A by shielding exposed basic domains. May also import H2A, H3, H4 histones (By similarity), RPL4 and RPL6.

Synonyms:

DKFZp761M1547; FLJ10402; IMP9; KIAA1192; RANBP9

Product images:


Host: Rabbit
 Target Name: IPO9
 Sample Type: RPMI 8226 Cell Lysate
 Antibody Dilution: 1.0µg/ml

Host: Rabbit
 Target Name: IPO9
 Sample Tissue: Human RPMI 8226 Whole Cell lysates
 Antibody Dilution: 1 ug/ml