

## Product datasheet for **TA360517**

### Thrombospondin 1 (THBS1) Rabbit Polyclonal Antibody

#### Product data:

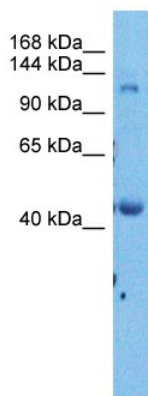
Product Type:	Primary Antibodies
Applications:	WB
Reactivity:	Human
Host:	Rabbit
Clonality:	Polyclonal
Immunogen:	The immunogen is a synthetic peptide directed towards the middle region of human THBS1
Specificity:	<b>Expected reactivity:</b> Human
Formulation:	Liquid. Purified antibody supplied in 1x PBS buffer with 0.09% (w/v) sodium azide and 2% sucrose. <i>Note that this product is shipped as lyophilized powder to China customers.</i>
Concentration:	lot specific
Purification:	Affinity purified
Conjugation:	Unconjugated
Storage:	For short term use, store at 2-8°C up to 1 week. For long term storage, store at -20°C in small aliquots to prevent freeze-thaw cycles.
Stability:	Shelf life: one year from despatch.
Predicted Protein Size:	129 kDa
Gene Name:	thrombospondin 1
Database Link:	<a href="#">NP_003237.2</a> <a href="#">Entrez Gene 7057 Human</a> <a href="#">P07996</a>
Background:	The protein encoded by this gene is a subunit of a disulfide-linked homotrimeric protein. This protein is an adhesive glycoprotein that mediates cell-to-cell and cell-to-matrix interactions. This protein can bind to fibrinogen, fibronectin, laminin, type V collagen and integrins alpha-V/beta-1. This protein has been shown to play roles in platelet aggregation, angiogenesis, and tumorigenesis.
Synonyms:	THBS; THBS-1; thrombospondin-1p180; TSP; TSP-1; TSP1
Protein Families:	Druggable Genome



[View online »](#)

**Protein Pathways:** Bladder cancer, ECM-receptor interaction, Focal adhesion, p53 signaling pathway, TGF-beta signaling pathway

### Product images:



Host: Rabbit  
Target Name: THBS1  
Sample Type: Lung Tumor Lysate  
Antibody Dilution: 1.0 $\mu$ g/ml

Host: Rabbit  
Target Name: THBS1  
Sample Tissue: Human Lung Tumor  
Antibody Dilution: 1.0 $\mu$ g/ml