

Product datasheet for **TA360503**

SEC14L4 Rabbit Polyclonal Antibody

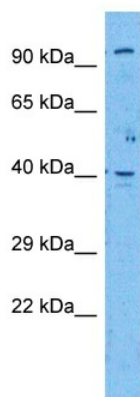
Product data:

Product Type:	Primary Antibodies
Applications:	WB
Reactivity:	Human
Host:	Rabbit
Clonality:	Polyclonal
Immunogen:	The immunogen is a synthetic peptide directed towards the middle region of human SEC14L4
Specificity:	Expected reactivity: Human
Formulation:	Liquid. Purified antibody supplied in 1x PBS buffer with 0.09% (w/v) sodium azide and 2% sucrose. <i>Note that this product is shipped as lyophilized powder to China customers.</i>
Concentration:	lot specific
Purification:	Affinity purified
Conjugation:	Unconjugated
Storage:	For short term use, store at 2-8°C up to 1 week. For long term storage, store at -20°C in small aliquots to prevent freeze-thaw cycles.
Stability:	Shelf life: one year from despatch.
Predicted Protein Size:	47 kDa
Gene Name:	SEC14 like lipid binding 4
Database Link:	NP_001154840.1 Entrez Gene 284904 Human Q9UDX3
Background:	The protein encoded by this gene is highly similar to the protein encoded by the <i>Saccharomyces cerevisiae</i> SEC14 gene. The SEC14 protein is a phosphatidylinositol transfer protein that is essential for biogenesis of Golgi-derived transport vesicles, and thus is required for the export of yeast secretory proteins from the Golgi complex. The specific function of this protein has not yet been determined. Alternative splicing results in multiple transcript variants.
Synonyms:	dj130H16.5; TAP3



[View online »](#)

Product images:



Host: Rabbit
Target Name: SEC14L4
Sample Type: 786-0 Cell Lysate
Antibody Dilution: 1.0 μ g/ml

Host: Rabbit
Target Name: SEC14L4
Sample Tissue: Human 786-0 Whole Cell
Antibody Dilution: 1.0 μ g/ml