

Product datasheet for **TA360501**

GFM1 Rabbit Polyclonal Antibody

Product data:

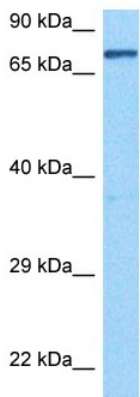
Product Type:	Primary Antibodies
Applications:	WB
Reactivity:	Human
Host:	Rabbit
Clonality:	Polyclonal
Immunogen:	The immunogen is a synthetic peptide directed towards the middle region of human GFM1
Specificity:	Expected reactivity: Human
Formulation:	Liquid. Purified antibody supplied in 1x PBS buffer with 0.09% (w/v) sodium azide and 2% sucrose. <i>Note that this product is shipped as lyophilized powder to China customers.</i>
Concentration:	lot specific
Purification:	Affinity purified
Conjugation:	Unconjugated
Storage:	For short term use, store at 2-8°C up to 1 week. For long term storage, store at -20°C in small aliquots to prevent freeze-thaw cycles.
Stability:	Shelf life: one year from despatch.
Predicted Protein Size:	82 kDa
Gene Name:	G elongation factor, mitochondrial 1
Database Link:	NP_001295093.1 Entrez Gene 85476 Human Q96RP9
Background:	Eukaryotes contain two protein translational systems, one in the cytoplasm and one in the mitochondria. Mitochondrial translation is crucial for maintaining mitochondrial function and mutations in this system lead to a breakdown in the respiratory chain-oxidative phosphorylation system and to impaired maintenance of mitochondrial DNA. This gene encodes one of the mitochondrial translation elongation factors. Its role in the regulation of normal mitochondrial function and in different disease states attributed to mitochondrial dysfunction is not known.



[View online »](#)

Synonyms: COXPD1; EF-Gmt; EFG; EFG1; EFGM; EGF1; FLJ12662; FLJ13632; FLJ20773; GFM; hEFG1

Product images:



Host: Rabbit
 Target Name: GFM1
 Sample Type: RPMI 8226 Cell Lysate
 Antibody Dilution: 1.0µg/ml

Host: Rabbit
 Target Name: GFM1
 Sample Tissue: RPMI 8226 Whole Cell lysates
 Antibody Dilution: 1.0ug/ml