

Product datasheet for **TA360499**

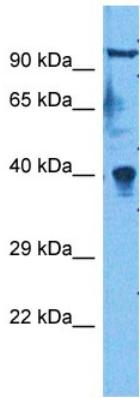
GNAT3 Rabbit Polyclonal Antibody

Product data:

Product Type:	Primary Antibodies
Applications:	WB
Reactivity:	Human, Mouse
Host:	Rabbit
Clonality:	Polyclonal
Immunogen:	The immunogen is a synthetic peptide directed towards the middle region of human GNAT3
Specificity:	Expected reactivity: Human
Formulation:	Liquid. Purified antibody supplied in 1x PBS buffer with 0.09% (w/v) sodium azide and 2% sucrose. <i>Note that this product is shipped as lyophilized powder to China customers.</i>
Concentration:	lot specific
Purification:	Affinity purified
Conjugation:	Unconjugated
Storage:	For short term use, store at 2-8°C up to 1 week. For long term storage, store at -20°C in small aliquots to prevent freeze-thaw cycles.
Stability:	Shelf life: one year from despatch.
Predicted Protein Size:	40 kDa
Gene Name:	G protein subunit alpha transducin 3
Database Link:	NP_001095856.1 Entrez Gene 242851 Mouse Entrez Gene 346562 Human A8MTJ3
Background:	Sweet, bitter, and umami tastes are transmitted from taste receptors by a specific guanine nucleotide binding protein. The protein encoded by this gene is the alpha subunit of this heterotrimeric G protein, which is found not only in the oral epithelium but also in gut tissues. Variations in this gene have been linked to metabolic syndrome.
Synonyms:	GDCA; gustducin
Protein Pathways:	Taste transduction

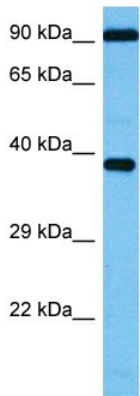


[View online »](#)

Product images:

Host: Rabbit
Target Name: GNAT3
Sample Type: 293T Cell Lysate
Antibody Dilution: 1.0µg/ml

Host: Rabbit
Target Name: GNAT3
Sample Tissue: Human 293T Whole Cell
Antibody Dilution: 1.0ug/ml



Host: Rabbit
Target Name: Gnat3
Sample Type: Mouse Testis Lysate
Antibody Dilution: 1.0µg/ml

Host: Mouse
Target Name: GNAT3
Sample Tissue: Mouse Testis
Antibody Dilution: 1ug/ml