

## Product datasheet for **TA360495**

### ATP13A3 Rabbit Polyclonal Antibody

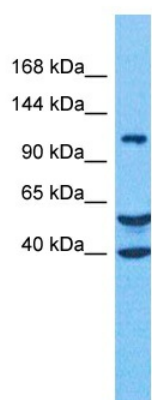
#### Product data:

Product Type:	Primary Antibodies
Applications:	WB
Reactivity:	Human
Host:	Rabbit
Clonality:	Polyclonal
Immunogen:	The immunogen is a synthetic peptide directed towards the N terminal region of human ATP13A3
Specificity:	<b>Expected reactivity:</b> Human
Formulation:	Liquid. Purified antibody supplied in 1x PBS buffer with 0.09% (w/v) sodium azide and 2% sucrose. <i>Note that this product is shipped as lyophilized powder to China customers.</i>
Concentration:	lot specific
Purification:	Affinity purified
Conjugation:	Unconjugated
Storage:	For short term use, store at 2-8°C up to 1 week. For long term storage, store at -20°C in small aliquots to prevent freeze-thaw cycles.
Stability:	Shelf life: one year from despatch.
Predicted Protein Size:	138 kDa
Gene Name:	ATPase 13A3
Database Link:	<a href="#">NP_078800.3</a> <a href="#">Entrez Gene 79572 Human</a> <a href="#">Q9H7F0</a>
Background:	ATP13A3 is a member of the P-type ATPase family of proteins that transport a variety of cations across membranes. Other P-type ATPases include ATP7B (MIM 606882) and ATP7A (MIM 300011).[supplied by OMIM, Aug 2008]
Synonyms:	AFURS1; DKFZp686K16189; FLJ90613; OTTHUMP00000209099
Protein Families:	Transmembrane



[View online »](#)

## Product images:



Host: Rabbit  
Target Name: AT133  
Sample Type: Fetal Liver Lysate  
Antibody Dilution: 1.0 $\mu$ g/ml

Host: Rabbit  
Target Name: ATP13A3  
Sample Tissue: Human Fetal Liver  
Antibody Dilution: 1.0 $\mu$ g/ml