

Product datasheet for **TA360493**

NUP37 Rabbit Polyclonal Antibody

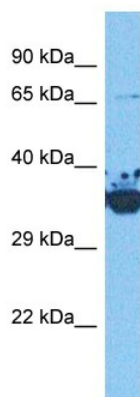
Product data:

Product Type:	Primary Antibodies
Applications:	WB
Reactivity:	Human
Host:	Rabbit
Clonality:	Polyclonal
Immunogen:	The immunogen is a synthetic peptide directed towards the middle region of human NUP37
Specificity:	Expected reactivity: Human
Formulation:	Liquid. Purified antibody supplied in 1x PBS buffer with 0.09% (w/v) sodium azide and 2% sucrose.
Concentration:	lot specific
Purification:	Affinity purified
Conjugation:	Unconjugated
Storage:	For short term use, store at 2-8°C up to 1 week. For long term storage, store at -20°C in small aliquots to prevent freeze-thaw cycles.
Stability:	Shelf life: one year from despatch.
Predicted Protein Size:	37 kDa
Gene Name:	nucleoporin 37kDa
Database Link:	NP_076962.2 Entrez Gene 79023 Human Q8NFH4
Background:	Bidirectional transport of macromolecules between the cytoplasm and nucleus occurs through nuclear pore complexes (NPCs) embedded in the nuclear envelope. NPCs are composed of subcomplexes, and NUP37 is part of one such subcomplex, Nup107-160 (Loiodice et al., 2004 [PubMed 15146057]).[supplied by OMIM, Mar 2008]
Synonyms:	FLJ22618; MGC5585; p37



[View online »](#)

Product images:



Host: Rabbit
Target Name: NUP37
Sample Type: DLD1 Cell Lysate
Antibody Dilution: 1.0 μ g/ml

Host: Rabbit
Target Name: NUP37
Sample Tissue: Human DLD1 Whole Cell
Antibody Dilution: 1.0ug/ml