

Product datasheet for **TA360492**

ALG8 Rabbit Polyclonal Antibody

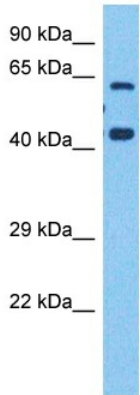
Product data:

| | |
|-------------------------|--|
| Product Type: | Primary Antibodies |
| Applications: | WB |
| Reactivity: | Human |
| Host: | Rabbit |
| Clonality: | Polyclonal |
| Immunogen: | The immunogen is a synthetic peptide directed towards the middle region of human ALG8 |
| Specificity: | Expected reactivity: Human |
| Formulation: | Liquid. Purified antibody supplied in 1x PBS buffer with 0.09% (w/v) sodium azide and 2% sucrose. |
| Concentration: | lot specific |
| Purification: | Affinity purified |
| Conjugation: | Unconjugated |
| Storage: | For short term use, store at 2-8°C up to 1 week. For long term storage, store at -20°C in small aliquots to prevent freeze-thaw cycles. |
| Stability: | Shelf life: one year from despatch. |
| Predicted Protein Size: | 60 kDa |
| Gene Name: | ALG8, alpha-1,3-glucosyltransferase |
| Database Link: | NP_001007028.1 Entrez Gene 79053 Human Q9BVK2 |
| Background: | This gene encodes a member of the ALG6/ALG8 glucosyltransferase family. The encoded protein catalyzes the addition of the second glucose residue to the lipid-linked oligosaccharide precursor for N-linked glycosylation of proteins. Mutations in this gene have been associated with congenital disorder of glycosylation type 1h (CDG-1h). Alternatively spliced transcript variants encoding different isoforms have been identified. |
| Synonyms: | dolichyl-P-glucose:Glc1Man9GlcNAc2-PP-dolichyl- <i>alp</i> ; HUSSY-02; MGC2840 |
| Protein Families: | Transmembrane |



[View online »](#)

Protein Pathways: Metabolic pathways, N-Glycan biosynthesis

Product images:

Host: Rabbit
Target Name: ALG8
Sample Type: Fetal kidney Lysate
Antibody Dilution: 1.0 μ g/ml

Host: Rabbit
Target Name: ALG8
Sample Tissue: Human Fetal Kidney
Antibody Dilution: 1.0 μ g/ml