

Product datasheet for **TA360489**

ZXDC Rabbit Polyclonal Antibody

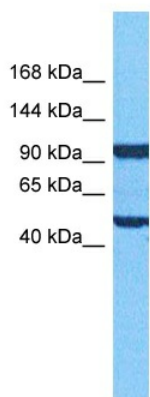
Product data:

Product Type:	Primary Antibodies
Applications:	WB
Reactivity:	Human
Host:	Rabbit
Clonality:	Polyclonal
Immunogen:	The immunogen is a synthetic peptide directed towards the N terminal region of human ZXDC
Specificity:	Expected reactivity: Human
Formulation:	Liquid. Purified antibody supplied in 1x PBS buffer with 0.09% (w/v) sodium azide and 2% sucrose.
Concentration:	lot specific
Purification:	Affinity purified
Conjugation:	Unconjugated
Storage:	For short term use, store at 2-8°C up to 1 week. For long term storage, store at -20°C in small aliquots to prevent freeze-thaw cycles.
Stability:	Shelf life: one year from despatch.
Predicted Protein Size:	90 kDa
Gene Name:	ZXD family zinc finger C
Database Link:	NP_001035743.1 Entrez Gene 79364 Human Q2QGD7
Synonyms:	DKFZp547N024; FLJ13861; FLJ36477; FLJ37830; MGC11349; SERH2790; ZXDL



[View online »](#)

Product images:



Host: Rabbit
Target Name: ZXDC
Sample Type: HepG2 Cell Lysate
Antibody Dilution: 1.0 μ g/ml

Host: Rabbit
Target Name: ZXDC
Sample Tissue: Human HepG2 Whole Cell
Antibody Dilution: 1.0ug/ml