

Product datasheet for **TA360487**

CYP4F12 Rabbit Polyclonal Antibody

Product data:

| | |
|-------------------------|---|
| Product Type: | Primary Antibodies |
| Applications: | WB |
| Reactivity: | Human |
| Host: | Rabbit |
| Clonality: | Polyclonal |
| Immunogen: | The immunogen is a synthetic peptide directed towards the middle region of human CYP4F12 |
| Specificity: | Expected reactivity: Human |
| Formulation: | Liquid. Purified antibody supplied in 1x PBS buffer with 0.09% (w/v) sodium azide and 2% sucrose. <i>Note that this product is shipped as lyophilized powder to China customers.</i> |
| Concentration: | lot specific |
| Purification: | Affinity purified |
| Conjugation: | Unconjugated |
| Storage: | For short term use, store at 2-8°C up to 1 week. For long term storage, store at -20°C in small aliquots to prevent freeze-thaw cycles. |
| Stability: | Shelf life: one year from despatch. |
| Predicted Protein Size: | 60 kDa |
| Gene Name: | cytochrome P450 family 4 subfamily F member 12 |
| Database Link: | NP_076433.3 Entrez Gene 66002 Human Q9HCS2 |

Background: This gene encodes a member of the cytochrome P450 superfamily of enzymes. The cytochrome P450 proteins are monooxygenases which catalyze many reactions involved in drug metabolism and synthesis of cholesterol, steroids and other lipids. This protein likely localizes to the endoplasmic reticulum. When expressed in yeast the enzyme is capable of oxidizing arachidonic acid. It can also catalyze the epoxidation of 22:6n-3 and 22:5n-3 polyunsaturated long-chain fatty acids. This gene is part of a cluster of cytochrome P450 genes on chromosome 19. Alternative splicing results in multiple transcript variants.

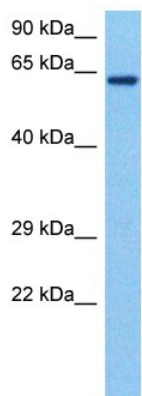


[View online »](#)

Synonyms: CYP1VF12; F22329_1

Protein Families: Druggable Genome, P450, Transmembrane

Product images:



Host: Rabbit
Target Name: CP4FC
Sample Type: Hela Cell Lysate
Antibody Dilution: 1.0 μ g/ml

Host: Rabbit
Target Name: CYP4F12
Sample Tissue: Human Hela Whole Cell
Antibody Dilution: 1.0 μ g/ml