

## Product datasheet for **TA360483**

### MMP27 Rabbit Polyclonal Antibody

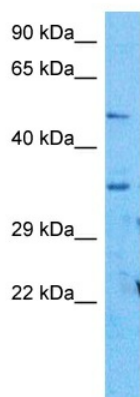
#### Product data:

Product Type:	Primary Antibodies
Applications:	WB
Reactivity:	Human
Host:	Rabbit
Clonality:	Polyclonal
Immunogen:	The immunogen is a synthetic peptide directed towards the middle region of human MMP27
Specificity:	<b>Expected reactivity:</b> Human
Formulation:	Liquid. Purified antibody supplied in 1x PBS buffer with 0.09% (w/v) sodium azide and 2% sucrose. <i>Note that this product is shipped as lyophilized powder to China customers.</i>
Concentration:	lot specific
Purification:	Affinity purified
Conjugation:	Unconjugated
Storage:	For short term use, store at 2-8°C up to 1 week. For long term storage, store at -20°C in small aliquots to prevent freeze-thaw cycles.
Stability:	Shelf life: one year from despatch.
Predicted Protein Size:	59 kDa
Gene Name:	matrix metalloproteinase 27
Database Link:	<a href="#">NP_071405.2</a> <a href="#">Entrez Gene 64066 Human</a> <a href="#">Q9H306</a>
Background:	Proteins of the matrix metalloproteinase (MMP) family are involved in the breakdown of extracellular matrix in normal physiological processes, such as embryonic development, reproduction, and tissue remodeling, as well as in disease processes, such as arthritis and metastasis. Most MMP's are secreted as inactive proproteins which are activated when cleaved by extracellular proteinases.
Synonyms:	MMP-27
Protein Families:	Druggable Genome



[View online »](#)

## Product images:



Host: Rabbit  
Target Name: MMP27  
Sample Type: DLD1 Cell Lysate  
Antibody Dilution: 1.0 $\mu$ g/ml

Host: Rabbit  
Target Name: MMP27  
Sample Tissue: Human DLD1 Whole Cell  
Antibody Dilution: 1.0 $\mu$ g/ml