

## Product datasheet for **TA360481**

### USP29 Rabbit Polyclonal Antibody

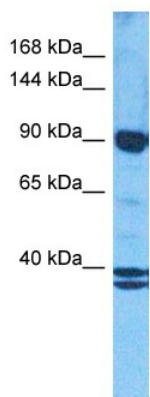
#### Product data:

Product Type:	Primary Antibodies
Applications:	WB
Reactivity:	Human
Host:	Rabbit
Clonality:	Polyclonal
Immunogen:	The immunogen is a synthetic peptide directed towards the N terminal region of human USP29
Specificity:	<b>Expected reactivity:</b> Human
Formulation:	Liquid. Purified antibody supplied in 1x PBS buffer with 0.09% (w/v) sodium azide and 2% sucrose.
Concentration:	lot specific
Purification:	Affinity purified
Conjugation:	Unconjugated
Storage:	For short term use, store at 2-8°C up to 1 week. For long term storage, store at -20°C in small aliquots to prevent freeze-thaw cycles.
Stability:	Shelf life: one year from despatch.
Predicted Protein Size:	104 kDa
Gene Name:	ubiquitin specific peptidase 29
Database Link:	<a href="#">NP_065954.1</a> <a href="#">Entrez Gene 57663 Human</a> <a href="#">Q9HBJ7</a>
Synonyms:	HOM-TES-84/86; MGC163266; MGC163270
Protein Families:	Protease



[View online »](#)

## Product images:



Host: Rabbit

Target Name: UBP29

Sample Type: Fetal Liver Lysate

Antibody Dilution: 1.0 $\mu$ g/ml

Host: Rabbit

Target Name: USP29

Sample Tissue: Human Fetal Liver

Antibody Dilution: 1.0ug/ml