

Product datasheet for **TA360480**

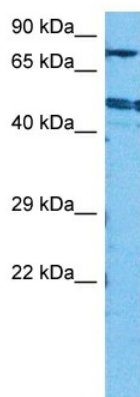
KLHL1 Rabbit Polyclonal Antibody

Product data:

Product Type:	Primary Antibodies
Applications:	WB
Reactivity:	Human
Host:	Rabbit
Clonality:	Polyclonal
Immunogen:	The immunogen is a synthetic peptide directed towards the N terminal region of human KLHL1
Specificity:	Expected reactivity: Human
Formulation:	Liquid. Purified antibody supplied in 1x PBS buffer with 0.09% (w/v) sodium azide and 2% sucrose. <i>Note that this product is shipped as lyophilized powder to China customers.</i>
Concentration:	lot specific
Purification:	Affinity purified
Conjugation:	Unconjugated
Storage:	For short term use, store at 2-8°C up to 1 week. For long term storage, store at -20°C in small aliquots to prevent freeze-thaw cycles.
Stability:	Shelf life: one year from despatch.
Predicted Protein Size:	83 kDa
Gene Name:	kelch like family member 1
Database Link:	NP_001273654.1 Entrez Gene 57626 Human Q9NR64
Background:	The KLHL1 protein belongs to a family of actin-organizing proteins related to Drosophila Kelch (Nemes et al., 2000 [PubMed 10888605]).[supplied by OMIM, Feb 2010]
Synonyms:	FLJ30047; KIAA1490; MRP2



[View online »](#)

Product images:

Host: Rabbit
Target Name: KLHL1
Sample Type: HepG2 Whole Cell Lysate
Antibody Dilution: 1.0 μ g/ml

Host: Rabbit
Target Name: KLHL1
Sample Tissue: Human HepG2 Whole Cell
Antibody Dilution: 1.0ug/ml