

Product datasheet for **TA360476**

EPB41L5 Rabbit Polyclonal Antibody

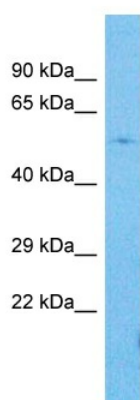
Product data:

Product Type:	Primary Antibodies
Applications:	WB
Reactivity:	Human
Host:	Rabbit
Clonality:	Polyclonal
Immunogen:	The immunogen is a synthetic peptide directed towards the middle region of human EPB41L5
Specificity:	Expected reactivity: Human
Formulation:	Liquid. Purified antibody supplied in 1x PBS buffer with 0.09% (w/v) sodium azide and 2% sucrose. <i>Note that this product is shipped as lyophilized powder to China customers.</i>
Concentration:	lot specific
Purification:	Affinity purified
Conjugation:	Unconjugated
Storage:	For short term use, store at 2-8°C up to 1 week. For long term storage, store at -20°C in small aliquots to prevent freeze-thaw cycles.
Stability:	Shelf life: one year from despatch.
Predicted Protein Size:	82 kDa
Gene Name:	erythrocyte membrane protein band 4.1 like 5
Database Link:	NP_001171866.1 Entrez Gene 57669 Human Q9HCM4
Synonyms:	BE37; FLJ12957; KIAA1548; YMO1



[View online »](#)

Product images:



Host: Rabbit
Target Name: E41L5
Sample Type: DLD1 Whole Cell Lysate
Antibody Dilution: 1.0 μ g/ml

Host: Rabbit
Target Name: EPB41L5
Sample Tissue: Human DLD1 Whole Cell
Antibody Dilution: 1.0 μ g/ml