

Product datasheet for **TA360471**

FEM 1C (FEM1C) Rabbit Polyclonal Antibody

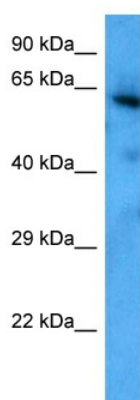
Product data:

Product Type:	Primary Antibodies
Applications:	WB
Reactivity:	Human
Host:	Rabbit
Clonality:	Polyclonal
Immunogen:	The immunogen is a synthetic peptide directed towards the middle region of human FEM1C
Specificity:	Expected reactivity: Human
Formulation:	Liquid. Purified antibody supplied in 1x PBS buffer with 0.09% (w/v) sodium azide and 2% sucrose.
Concentration:	lot specific
Purification:	Affinity purified
Conjugation:	Unconjugated
Storage:	For short term use, store at 2-8°C up to 1 week. For long term storage, store at -20°C in small aliquots to prevent freeze-thaw cycles.
Stability:	Shelf life: one year from despatch.
Predicted Protein Size:	69 kDa
Gene Name:	fem-1 homolog C
Database Link:	NP_064562.1 Entrez Gene 56929 Human Q96JPO
Synonyms:	EUROIMAGE686608; EUROIMAGE783647; FEM1-gamma; FEM1A; KIAA1785



[View online »](#)

Product images:



Host: Rabbit
Target Name: FEM1C
Sample Type: ACHN Cell Lysate
Antibody Dilution: 1.0 μ g/ml

Host: Rabbit
Target Name: FEM1C
Sample Tissue: Human ACHN Whole Cell
Antibody Dilution: 1.0ug/ml