

Product datasheet for **TA360469**

AKR1B10 Rabbit Polyclonal Antibody

Product data:

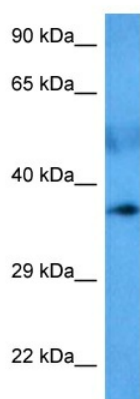
Product Type:	Primary Antibodies
Applications:	WB
Reactivity:	Human
Host:	Rabbit
Clonality:	Polyclonal
Immunogen:	The immunogen is a synthetic peptide directed towards the middle region of human AKR1B10
Specificity:	Expected reactivity: Human
Formulation:	Liquid. Purified antibody supplied in 1x PBS buffer with 0.09% (w/v) sodium azide and 2% sucrose. <i>Note that this product is shipped as lyophilized powder to China customers.</i>
Concentration:	lot specific
Purification:	Affinity purified
Conjugation:	Unconjugated
Storage:	For short term use, store at 2-8°C up to 1 week. For long term storage, store at -20°C in small aliquots to prevent freeze-thaw cycles.
Stability:	Shelf life: one year from despatch.
Predicted Protein Size:	35 kDa
Gene Name:	aldo-keto reductase family 1, member B10 (aldose reductase)
Database Link:	NP_064695.3 Entrez Gene 57016 Human O60218
Background:	This gene encodes a member of the aldo/keto reductase superfamily, which consists of more than 40 known enzymes and proteins. This member can efficiently reduce aliphatic and aromatic aldehydes, and it is less active on hexoses. It is highly expressed in adrenal gland, small intestine, and colon, and may play an important role in liver carcinogenesis.
Synonyms:	AKR1B11; AKR1B12; ALDRLn; ARL-1; ARL1; ARP; hARP; HIS; HSI; MGC14103
Protein Families:	Druggable Genome



[View online >](#)

Protein Pathways: Butanoate metabolism, Fructose and mannose metabolism, Linoleic acid metabolism, Metabolic pathways

Product images:



Host: Rabbit
Target Name: AKR1B10
Sample Type: Lung Tumor Lysate
Antibody Dilution: 1.0 μ g/ml

Host: Rabbit
Target Name: AKR1B10
Sample Tissue: Lung Tumor lysates
Antibody Dilution: 1 μ g/ml