

Product datasheet for **TA360468**

RPGRIP1 Rabbit Polyclonal Antibody

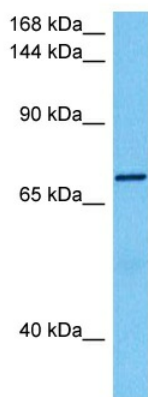
Product data:

Product Type:	Primary Antibodies
Applications:	WB
Reactivity:	Human
Host:	Rabbit
Clonality:	Polyclonal
Immunogen:	The immunogen is a synthetic peptide directed towards the middle region of human RPGRIP1
Specificity:	Expected reactivity: Human
Formulation:	Liquid. Purified antibody supplied in 1x PBS buffer with 0.09% (w/v) sodium azide and 2% sucrose.
Concentration:	lot specific
Purification:	Affinity purified
Conjugation:	Unconjugated
Storage:	For short term use, store at 2-8°C up to 1 week. For long term storage, store at -20°C in small aliquots to prevent freeze-thaw cycles.
Stability:	Shelf life: one year from despatch.
Predicted Protein Size:	73 kDa
Gene Name:	retinitis pigmentosa GTPase regulator interacting protein 1
Database Link:	AAG10000.1 Entrez Gene 57096 Human Q96KN7-2
Background:	This gene encodes a photoreceptor protein that interacts with retinitis pigmentosa GTPase regulator protein and is a key component of cone and rod photoreceptor cells. Mutations in this gene lead to autosomal recessive congenital blindness.
Synonyms:	CORD13; DKFZp686P0897; LCA6; RGI1; RGRIP; RPGRIP; RPGRIP1d



[View online »](#)

Product images:



Host: Rabbit
Target Name: RPGRIP1
Sample Type: Esophagus Tumor Lysate
Antibody Dilution: 1.0 μ g/ml

Host: Rabbit
Target Name: RPGRIP1
Sample Tissue: Human Esophagus Tumor lysates
Antibody Dilution: 1 μ g/ml