

Product datasheet for **TA360461**

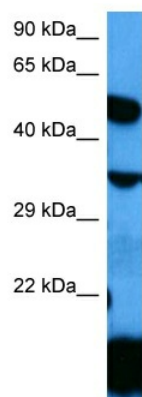
LMBR1L Rabbit Polyclonal Antibody

Product data:

Product Type:	Primary Antibodies
Applications:	WB
Reactivity:	Human
Host:	Rabbit
Clonality:	Polyclonal
Immunogen:	The immunogen is a synthetic peptide directed towards the C terminal region of human LMBR1L
Specificity:	Expected reactivity: Human
Formulation:	Liquid. Purified antibody supplied in 1x PBS buffer with 0.09% (w/v) sodium azide and 2% sucrose.
Concentration:	lot specific
Purification:	Affinity purified
Conjugation:	Unconjugated
Storage:	For short term use, store at 2-8°C up to 1 week. For long term storage, store at -20°C in small aliquots to prevent freeze-thaw cycles.
Stability:	Shelf life: one year from despatch.
Predicted Protein Size:	55 kDa
Gene Name:	limb development membrane protein 1 like
Database Link:	NP_001287679.1 Entrez Gene 55716 Human Q6UX01
Synonyms:	FLJ10494; FLJ36251; KIAA1174; LIMR
Protein Families:	Druggable Genome, Transmembrane



[View online »](#)

Product images:


Host: Rabbit
Target Name: LMBR1L
Sample Type: A549 Cell Lysate
Antibody Dilution: 1.0µg/ml

Host: Rabbit
Target Name: LMBR1L
Sample Tissue: Human A549 Whole Cell
Antibody Dilution: 1.0ug/ml