

Product datasheet for **TA360459**

UBE2W Rabbit Polyclonal Antibody

Product data:

Product Type:	Primary Antibodies
Applications:	WB
Reactivity:	Human
Host:	Rabbit
Clonality:	Polyclonal
Immunogen:	The immunogen is a synthetic peptide directed towards the C terminal region of human UBE2W
Specificity:	Expected reactivity: Human
Formulation:	Liquid. Purified antibody supplied in 1x PBS buffer with 0.09% (w/v) sodium azide and 2% sucrose. <i>Note that this product is shipped as lyophilized powder to China customers.</i>
Concentration:	lot specific
Purification:	Affinity purified
Conjugation:	Unconjugated
Storage:	For short term use, store at 2-8°C up to 1 week. For long term storage, store at -20°C in small aliquots to prevent freeze-thaw cycles.
Stability:	Shelf life: one year from despatch.
Predicted Protein Size:	19 kDa
Gene Name:	ubiquitin conjugating enzyme E2 W (putative)
Database Link:	NP_060769.4 Entrez Gene 55284 Human Q96B02-3
Background:	This gene encodes a nuclear-localized ubiquitin-conjugating enzyme (E2) that, along with ubiquitin-activating (E1) and ligating (E3) enzymes, coordinates the addition of a ubiquitin moiety to existing proteins. The encoded protein promotes the ubiquitination of Fanconi anemia complementation group proteins and may be important in the repair of DNA damage. There is a pseudogene for this gene on chromosome 1. Alternative splicing results in multiple transcript variants.



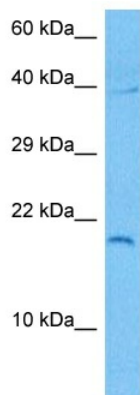
[View online »](#)

Synonyms: FLJ11011; hUBC-16

Protein Families: Transcription Factors

Protein Pathways: Ubiquitin mediated proteolysis

Product images:



Host: Rabbit
Target Name: UBE2W
Sample Type: Ovary Tumor Lysate
Antibody Dilution: 1.0µg/ml

Host: Rabbit
Target Name: UBE2W
Sample Tissue: Human Ovary Tumor lysates
Antibody Dilution: 1ug/ml