

## Product datasheet for **TA360444**

### **RAB6B Rabbit Polyclonal Antibody**

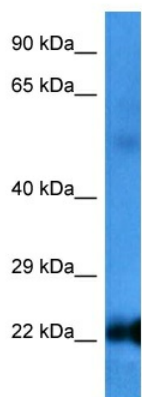
#### **Product data:**

Product Type:	Primary Antibodies
Applications:	WB
Reactivity:	Human
Host:	Rabbit
Clonality:	Polyclonal
Immunogen:	The immunogen is a synthetic peptide directed towards the C terminal region of human RAB6B
Specificity:	<b>Expected reactivity:</b> Human
Formulation:	Liquid. Purified antibody supplied in 1x PBS buffer with 0.09% (w/v) sodium azide and 2% sucrose.
Concentration:	lot specific
Purification:	Affinity purified
Conjugation:	Unconjugated
Storage:	For short term use, store at 2-8°C up to 1 week. For long term storage, store at -20°C in small aliquots to prevent freeze-thaw cycles.
Stability:	Shelf life: one year from despatch.
Predicted Protein Size:	23 kDa
Gene Name:	RAB6B, member RAS oncogene family
Database Link:	<a href="#">NP_057661.3</a> <a href="#">Entrez Gene 51560 Human</a> <a href="#">Q9NRW1</a>
Synonyms:	RAB6B
Protein Families:	Druggable Genome



[View online »](#)

Product images:



Host: Rabbit  
Target Name: RAB6B  
Sample Type: HeLa Cell Lysate  
Antibody Dilution: 1.0µg/ml

Host: Rabbit  
Target Name: RAB6B  
Sample Tissue: Human HeLa Whole Cell  
Antibody Dilution: 1.0ug/ml