

Product datasheet for **TA360439**

WDR42A (DCAF8) Rabbit Polyclonal Antibody

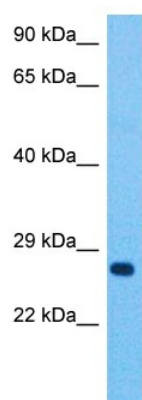
Product data:

Product Type:	Primary Antibodies
Applications:	WB
Reactivity:	Human
Host:	Rabbit
Clonality:	Polyclonal
Immunogen:	The immunogen is a synthetic peptide directed towards the middle region of human DCAF8
Specificity:	Expected reactivity: Human
Formulation:	Liquid. Purified antibody supplied in 1x PBS buffer with 0.09% (w/v) sodium azide and 2% sucrose.
Concentration:	lot specific
Purification:	Affinity purified
Conjugation:	Unconjugated
Storage:	For short term use, store at 2-8°C up to 1 week. For long term storage, store at -20°C in small aliquots to prevent freeze-thaw cycles.
Stability:	Shelf life: one year from despatch.
Predicted Protein Size:	67 kDa
Gene Name:	DDB1 and CUL4 associated factor 8
Database Link:	NP_056541.2 Entrez Gene 50717 Human Q5TAQ9
Background:	This gene encodes a WD repeat-containing protein that interacts with the Cul4-Ddb1 E3 ligase macromolecular complex. Multiple alternatively spliced transcript variants have been found for this gene.
Synonyms:	AA408877; AA433120; AA792214; AU018973; C76055; D1Dau35e; D1Ucla4; H326; RGD1308513; Wdr42a



[View online »](#)

Product images:



Host: Rabbit
Target Name: DCAF8
Sample Type: Lung Tumor Lysate
Antibody Dilution: 1.0µg/ml

Host: Rabbit
Target Name: DCAF8
Sample Tissue: Human Lung Tumor
Antibody Dilution: 1.0ug/ml