

Product datasheet for **TA360437**

TRHDE Rabbit Polyclonal Antibody

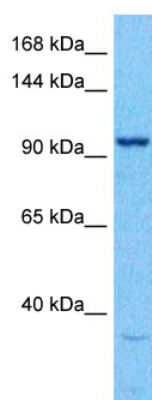
Product data:

Product Type:	Primary Antibodies
Applications:	WB
Reactivity:	Human
Host:	Rabbit
Clonality:	Polyclonal
Immunogen:	The immunogen is a synthetic peptide directed towards the N terminal region of human TRHDE
Specificity:	Expected reactivity: Human
Formulation:	Liquid. Purified antibody supplied in 1x PBS buffer with 0.09% (w/v) sodium azide and 2% sucrose.
Concentration:	lot specific
Purification:	Affinity purified
Conjugation:	Unconjugated
Storage:	For short term use, store at 2-8°C up to 1 week. For long term storage, store at -20°C in small aliquots to prevent freeze-thaw cycles.
Stability:	Shelf life: one year from despatch.
Predicted Protein Size:	112 kDa
Gene Name:	thyrotropin releasing hormone degrading enzyme
Database Link:	NP_037513.1 Entrez Gene 29953 Human Q9UKU6
Background:	This gene encodes a member of the peptidase M1 family. The encoded protein is an extracellular peptidase that specifically cleaves and inactivates the neuropeptide thyrotropin-releasing hormone.
Synonyms:	FLJ22381; PAP-II; PGPEP2; Thyroliberinase; TRH-DE
Protein Families:	Druggable Genome, Protease, Transmembrane



[View online »](#)

Product images:



Host: Rabbit
Target Name: TRHDE
Sample Type: PANC1 Cell Lysate
Antibody Dilution: 1.0 μ g/ml

Host: Rabbit
Target Name: TRHDE
Sample Tissue: PANC1 Whole Cell lysates
Antibody Dilution: 1.0 μ g/ml