

## Product datasheet for **TA360432**

### SEC61A (SEC61A1) Rabbit Polyclonal Antibody

#### Product data:

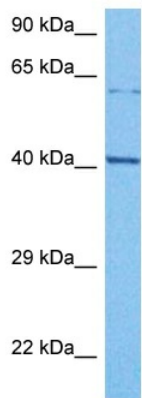
Product Type:	Primary Antibodies
Applications:	WB
Reactivity:	Human
Host:	Rabbit
Clonality:	Polyclonal
Immunogen:	The immunogen is a synthetic peptide directed towards the middle region of human SEC61A1
Specificity:	<b>Expected reactivity:</b> Human
Formulation:	Liquid. Purified antibody supplied in 1x PBS buffer with 0.09% (w/v) sodium azide and 2% sucrose. <i>Note that this product is shipped as lyophilized powder to China customers.</i>
Concentration:	lot specific
Purification:	Affinity purified
Conjugation:	Unconjugated
Storage:	For short term use, store at 2-8°C up to 1 week. For long term storage, store at -20°C in small aliquots to prevent freeze-thaw cycles.
Stability:	Shelf life: one year from despatch.
Predicted Protein Size:	52 kDa
Gene Name:	Sec61 translocon alpha 1 subunit
Database Link:	<a href="#">NP_037468.1</a> <a href="#">Entrez Gene 29927 Human</a> <a href="#">P61619</a>
Background:	The protein encoded by this gene belongs to the SECY/SEC61- alpha family. It appears to play a crucial role in the insertion of secretory and membrane polypeptides into the endoplasmic reticulum. This protein found to be tightly associated with membrane-bound ribosomes, either directly or through adaptor proteins. This gene encodes an alpha subunit of the heteromeric SEC61 complex, which also contains beta and gamma subunits.
Synonyms:	HSEC61; SEC61; SEC61A
Protein Families:	Transmembrane



[View online »](#)

Protein Pathways: Vibrio cholerae infection

### Product images:



Host: Rabbit  
Target Name: S61A1  
Sample Type: Hela Cell Lysate  
Antibody Dilution: 1.0 $\mu$ g/ml

Host: Rabbit  
Target Name: SEC61A1  
Sample Tissue: Human Hela Whole Cell  
Antibody Dilution: 1.0 $\mu$ g/ml