

## Product datasheet for **TA360422**

### DKK3 Rabbit Polyclonal Antibody

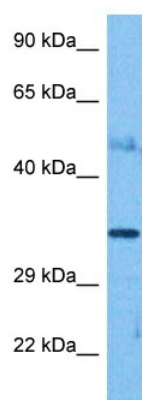
#### Product data:

Product Type:	Primary Antibodies
Applications:	WB
Reactivity:	Human
Host:	Rabbit
Clonality:	Polyclonal
Immunogen:	The immunogen is a synthetic peptide directed towards the middle region of human DKK3
Specificity:	<b>Expected reactivity:</b> Human
Formulation:	Liquid. Purified antibody supplied in 1x PBS buffer with 0.09% (w/v) sodium azide and 2% sucrose. <i>Note that this product is shipped as lyophilized powder to China customers.</i>
Concentration:	lot specific
Purification:	Affinity purified
Conjugation:	Unconjugated
Storage:	For short term use, store at 2-8°C up to 1 week. For long term storage, store at -20°C in small aliquots to prevent freeze-thaw cycles.
Stability:	Shelf life: one year from despatch.
Predicted Protein Size:	38 kDa
Gene Name:	dickkopf WNT signaling pathway inhibitor 3
Database Link:	<a href="#">NP_001018067.1</a> <a href="#">Entrez Gene 27122 Human</a> <a href="#">Q9UBP4</a>
Background:	This gene encodes a protein that is a member of the dickkopf family. The secreted protein contains two cysteine rich regions and is involved in embryonic development through its interactions with the Wnt signaling pathway. The expression of this gene is decreased in a variety of cancer cell lines and it may function as a tumor suppressor gene. Alternative splicing results in multiple transcript variants encoding the same protein.
Synonyms:	Dickkopf-3; Dkk-3; hDkk-3; REIC; RIG
Protein Families:	Druggable Genome, Secreted Protein



[View online »](#)

## Product images:



Host: Rabbit  
Target Name: DKK3  
Sample Tissue: Ovary Tumor Lysate  
Antibody Dilution: 1.0 $\mu$ g/ml

Host: Rabbit  
Target Name: DKK3  
Sample Tissue: Human Ovary Tumor  
Antibody Dilution: 1.0 $\mu$ g/ml